



CHICHESTER HARBOUR

Area of Outstanding Natural Beauty



Management Plan

Annual Review 2010-11

Chichester Harbour Management Plan Annual Review 2010-11

Contents

Chairman's Message	1
Introduction to Chichester Harbour AONB	2
On the Water	3
Wildlife	4
Landscape	5
Heritage	6
Planning and Development	7
Activities and Learning	8
Access and Recreation	9
Coastal Change	10
Sustainable Development Fund	11
Facts and Figures	12
Financial Summary	13
Managing the AONB	14

Chairman's Message

2011 marks an important milestone in the Conservancy's history; celebrating 40 years of Chichester Harbour Conservancy with a vast wealth of achievements in delivering joint management of both the Harbour and AONB and providing a model for the successful integrated management of the land and sea.

The challenges we face during the next year will become ever more testing as many of our partners face cuts in their funding, with knock-on effects for the Conservancy's funding for AONB project delivery. In the face of these difficult circumstances we are always looking at more creative ways of securing funding and delivering the best possible value for money in the services that we provide to the Harbour and AONB community.

The sudden and untimely death of Manager and Harbour Master John Davis while out sailing was met with great sadness by the Conservancy and Harbour community at large. John's strong leadership and inspired vision ensured that he left the Conservancy in very good shape. We feel positive that the Conservancy will build on his legacy for a Harbour and AONB for all to enjoy and treasure. We look forward to welcoming Siun Cranny into the new post of Director, to take the Conservancy forward as it faces future challenges in the changing economic climate.

I hope that you enjoy the second Annual Review for the Chichester Harbour AONB Management Plan 2009-14 which highlights some of the key achievements of the Conservancy and our Partners over the past year. The Action Summary Tables have been compiled separately and will be available to view online.

Councillor Louise Goldsmith
Chairman, Chichester Harbour Conservancy
June 2011

Introduction to Chichester Harbour

Chichester Harbour was designated as an Area of Outstanding Natural Beauty in 1964 in recognition of its unique coastal environment. The AONB is the smallest in the south east, covering an area 74km² and crossing the county boundary between Hampshire and West Sussex. It has a population of 8,351, with nearly 500,000 people within 10km of its boundary, and 1.5 million visitors a year.

Chichester Harbour Conservancy is a unique organisation acting as both the statutory Harbour Authority, and the Joint Advisory Committee (JAC) for the AONB. The Conservancy works closely with partner organisations, landowners and local interest groups to conserve and enhance the natural beauty of the AONB.

The AONB Management Plan

Chichester Harbour Conservancy has taken the lead role on behalf of West Sussex and Hampshire County Councils, Chichester District and Havant Borough Councils to produce and review the Chichester Harbour AONB Management Plan. The

Plan provides a framework for the Conservancy and its partners to deliver integrated and coordinated actions for the management of this nationally and internationally importance protected landscape over the next five years.

Funding

The Conservancy's environmental work is funded by a precept from both County Councils, and by AONB single pot grant funding from Natural England, with processes in place to hand over the AONB funding from Natural England direct to Defra in 2011-12. The work of the Harbour Authority is funded through the collection of harbour dues and moorings fees.



Chichester Harbour AONB is one of 47 Areas of Outstanding Natural Beauty in England, Wales and Northern Ireland, and forms part of a wider family of nationally protected landscapes which includes National Parks. There are nine AONBs and two National Parks wholly or partly within the South East of England covering 35% of the region.



On the Water

Members of the Conservancy and Advisory Committees formed a **Water Quality Working Group** to carry out high level talks with the Environment Agency to tackle the issue of storm discharges in the Harbour. Southern Water reported that last year the Apuldram Waste Water Treatment Works was storm discharging into the Harbour for a total of 60 days (108 during the previous year).

A repeat survey at the end of the 2010 season showed that the **Sandhead Dredge** has been a success and the deep water channel is maintained at -2mODM – this is good news for sailors and means that an additional dredge is not needed at present. The situation will remain under review.

April's **Working Boats Festival** attracted a record crowd of 1,200 visitors who had come to see the wealth of craft that work in Chichester Harbour. Crews were on hand from the RNLI, Sussex Sea Fisheries, Sussex Police as well as the Conservancy's own fleet of vessels including the Patrol RIBs, Terror, and Solar Heritage.

In June last year the UK Hydrographic Office produced a new addition of Chart 3418 Langstone and Chichester Harbours. This 9th edition of the

chart captures the various changes to navigation made recently and the latest hydrographic information. An **interactive version of the Harbour chart** is now available on the Conservancy's website.

The Harbour is a dynamic estuarine environment with constantly shifting sediment, posing navigation challenges for sailors. The most recent **bathymetric survey** from June 2010 is now available for harbour-users on the Conservancy's website.

Chichester Harbour Federation held a forum at Langstone Sailing Club in February to discuss the impact of **High Performance Dinghies** on harbour safety. The forum, which included a presentation from Chichester Harbour Conservancy, discussed safety issues surrounding ever faster vessels and ways of mitigating them. The Chichester Harbour Federation has revised its Code of Conduct for Racing in the light of the Forum.

Banner: an interactive version of the chart is now available on the Conservancy's website

Below: the Code of Conduct for Racing has been revised following the increased popularity of high performance dinghies



Matt Simmons Photography

The **Chichester Harbour Oyster Partnership** was formed between the Sussex Inshore Fisheries and Conservation Authority (IFCA), Chichester Harbour Conservancy, Natural England, the National Oceanographic Centre and local commercial fishermen to halt the dramatic decline in the Harbour's oyster population. Possible reasons for the decline include a parasitic disease, competition from Slipper Limpets and predation by Sting Winkles. Research showed that oysters were too thinly spread across the seabed to breed successfully. Through the partnership 2.5 tonnes of oysters were re-laid in a number of locations in the Harbour. It is hoped this will increase the chance of successful reproduction for the oysters, and stocks will be monitored for breeding success.

In partnership with the Hampshire and Isle of Wight Wildlife Trust, a detailed survey of the Harbour's **seagrass beds** was completed in 2010. 100ha of known seagrass beds have been mapped using hand-held GPS, to provide a baseline for future monitoring. The project was supported by the Sita Trust, Natural England and Solent Forum.

After three years of work, the **Wader Roost Strategy** is now complete and available online via the Solent Forum's website. The strategy identifies important sites for waders and Brent Geese in the Solent, highlighting the need for a coherent network of sites and setting out an approach for their protection. The study characterises what makes a site suitable for waders and Brent Geese, and identifies potentially suitable sites for the future.

During the last year, progress has been made on the **Solent Disturbance and Mitigation Project** which examines the impact of recreational activity on the Solent European Marine Site, particularly on migrating and overwintering bird species. To date the study has carried out extensive bird and visitor surveying, and has started to look at the effectiveness of different mitigation options. The final part of the project will model the impact of visitor activities on the survival rate of bird populations. It is hoped this information will help to influence and inform planning policy and development control decisions.

A wetland survey identified the **Lagoon Spire Snail** (*Heleobia stagnorum*), thought to be extinct in the UK since Roman times, located a strong population at a site in the Harbour and provided vital information about the species' ecological needs.

A partnership project to survey the Harbour's **juvenile fish** population was carried out by the Conservancy with the Sussex IFCA supported by the Environment Agency. The survey recorded nearly 30 fish species, indicating the importance of the Harbour for fish throughout their lifecycle stages.

Banner: Sanderling roosting, the three year Wader Roost Strategy identifies suitable sites in the Solent for waders
Below: bringing in and identifying the catch: the juvenile fish survey recorded nearly 30 different species



Landscape

Planning consent was granted to turn the eight acre former landfill site known as **Maybush Copse** into a community woodland. 4,500 trees were planted with a grant from the Forestry Commission's woodland creation grant scheme. 800 of these were planted by the community, through the Maybush Copse Friends. Funding has been secured to create open grassland areas and provide footpaths, wheelchair path and interpretation, thanks to the RDPE LEADER programme, Chichester Harbour Conservancy, Chichester District Council, West Sussex County Council and local Parish Councils, amongst many others.



Stephen Johnson

Work started on the conversion of the derelict stables at **Eames Farm, Thorney Island** to create a farm-based education centre, based on an organic beef farm in the largest area of coastal grazing marsh in Chichester Harbour AONB. The new centre will be used to highlight the important role farming plays in helping to manage the landscape of the AONB and the wildlife which depends upon it. The build provides an exemplar of sympathetic construction and incorporates sustainability features. Funding for the build was received from the Chichester Harbour Sustainable Development Fund, Friends of Chichester Harbour, Three Harbours and Coastal Plain RDPE LEADER Programme, The FG Woodger Trust, The Ernest Kleinwort Trust, West Sussex County Council and Chichester Harbour Conservancy.

The first **Chichester Harbour Landowner Liaison Group** meeting was held in March. All landowners within the AONB were invited to attend this informal get together to discuss key topics that affect both landowners and the AONB as a whole. This first meeting was attended by 13 landowners and managers, and focussed on the draft Shoreline Management Plan consultation, the Coastal Access proposals, LEADER funding opportunities and assistance the Conservancy can provide in terms of grants, tree and hedgerow planting and advice.

In partnership with the Friends of Chichester Harbour and local landowners, over 5,700 saplings were planted throughout the AONB as part of the **annual woodland and hedgerow planting** scheme. The re-planting of Cortice Copse at Thorney Island was completed, with support from the National Trust, Friends of Chichester Harbour and Thorney Island Shoot. A new area of native broadleaf woodland was created at Old Park Farm, Bosham. New hedgerows were planted at the Cobnor Estate, and Manor Farm, Chidham.

Banner: A winter sunset by Clive Morgan

Left: school children from Chidham and Southbourne helped with the tree planting at Maybush Copse

Below: the farm buildings at Eames Farm that are being converted into a farm-based education centre





Heritage

Archaeological volunteers from Chichester District Archaeology Society (CDAS) were delighted when their excavation at a field near Emsworth revealed a fine 20-room winged corridor **Romano-British villa**. During the two-week dig, with 185 volunteer days, 1,160 pieces of tesserae were unearthed weighing 27 kilos. Significantly, the project revealed a ceramic tiled floor, which may have been part of a bath house. The dig was lead by the CDAS, with support from Chichester Harbour AONB Sustainable Fund, Hampshire County Council and Havant Borough Council.

Timbers from Chichester Harbour's last surviving oyster boat, *Terror*, have been donated to **The Boat Project** as part of the London 2012 Cultural Olympiad. Lone Twin's Boat Project will use modern yacht building methods to turn wooden objects donated by people from across the South East into a 30' seaworthy yacht which archives stories and memories. Pieces of wood were salvaged from *Terror's* recent reconstruction and the Conservancy felt it was a fitting tribute to donate them to the Boat Project, preserving her place in the Harbour's living history.

A six month exhibition with the theme of **'Finding History All Around Us'** was a great success at the Spring Arts and Heritage Centre at Havant. The fascinating display exhibited a collection of items found whilst walking around or diving in Chichester Harbour, including a fossils, Roman pottery and WWII items. The display highlighted the rich history of the AONB and gave a fascinating insight to how the Harbour was used in the past. The objects on display were kindly loaned by Chichester Sub-aqua Club, CDAS and Chichester Harbour Conservancy.

Three free harbour **history visits** were offered to local schools, funded by the Friends of Chichester Harbour. The Roman-themed field trip sessions were led by the Conservancy's education team and involved themed activities, field survey and looking at artefacts, with the chance to enjoy Roman food!



Banner and bottom right: School children exploring the Roman shoreline and artefacts
Top right: Pieces of *Terror* donated to The Boat Project
Middle right: an archaeological dig revealed a 20 room Romano-British villa

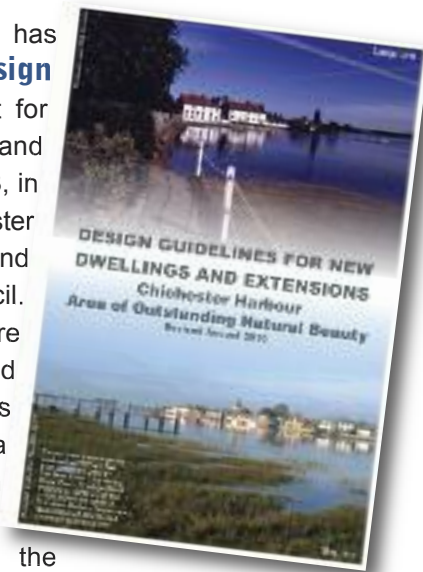
Planning & Development

Havant Borough Council's **Local Development Framework Core Strategy** document was found to be sound by the Inspector, following an Examination in Public in September 2010. The Core Strategy was launched in March 2011 and sets out the planning policy framework for Havant Borough until 2026. It outlines the vision for the area, sets broad policies for guiding growth, and identifies broad locations and 'strategic sites' for new housing, employment, other development and infrastructure. The Conservancy worked closely with the RSPB, Natural England and Hampshire Wildlife Trust to try and overcome nature conservation concerns within the strategy, and to ensure that the AONB received sufficient policy protection.

The Conservancy is monitoring the effectiveness of the mitigation package for the **Graylingwell Park development** in Chichester. Natural England and Chichester District Council agreed the mitigation package to overcome concerns about the impact of the housing development on the Chichester Harbour Special Protection Area, through increased recreational disturbance.



The Conservancy has produced a revised **Design Guidelines** document for new dwellings and extensions in the AONB, in partnership with Chichester District Council and Havant Borough Council. The guidelines are available to download from the Conservancy's website, and are a material consideration in determining planning applications within the AONB. The Design Guidelines were presented to Planning Officers at Chichester District Council, and will be presented to Havant Borough Council and all AONB Parish Council's and Residents Associations in 2011-12.



In June 2010 the Conservancy commented on proposals to extend the **West Itchenor Conservation Area**, including an updated Character Appraisal and Management Plan which involve actions for the ongoing preservation or enhancement of the area. This includes a recent 'Article 4 Direction' to restrict permitted development rights for all dwellings within the newly extended Conservation Area.

The Conservancy made a response to the Department for Communities and Local Government on a new Planning Policy Statement: **'Planning for a Natural and Healthy Environment'** in May 2010, raising concerns about the disproportionate coverage of sports and recreation issues and the current trend for the dilution of policy protection for the natural environment in favour of a more economy-focused approach.

Banner: mitigation packages have been put in place by Chichester District Council to protect areas such as Fishbourne Meadows from increased recreational disturbance
 Left: St Nicholas' Church in Itchenor is at the heart of the extended conservation area
 Above: revised Design Guidelines help in determining planning applications in the AONB

Activities & Learning

Groups of school children and older people came together through the **Intergenerational Project** to learn more about the AONB. The Conservancy's education team ran four sessions with Action in Rural Sussex, with a classroom session and solar boat trip, followed up by a presentation at the school. The groups came together to share experiences and carry research projects on topics including birds, boats, tides and life during World War II. The project was a great success with one elderly lady commenting, 'The children were a delight, so natural. I'm 86 but felt like I was their age.' One lady who came was 100, and another had never been on a boat despite living near the Harbour all her life.

Six local schools took part in the **Junior Conservancy** scheme as part of the KS2/KS3 Citizenship programme. The project, supported by the Friends of Chichester Harbour, is hosted at the Chichester Harbour Education, and County Hall in Chichester, and allowed school children to discover how local democracy works, and through role play discuss the proposed continuous coastal footpath in England.

Banner: Sailing on Heaven by Tomas Bermejo won second prize in the annual photography competition

Below: a group of adults with learning disabilities from the Wrenford Centre at Beaky's Wildlife Walk

Visiting school groups can now enjoy the new **Beaky's Wildlife Walk** at Dell Quay. The nature trail has ponds, display cases and attractive information panels, as well as seating areas that act as an outdoor classroom for primary groups. The nature trail is also a great resource for a group of adults with learning difficulties from the Wrenford Centre in Chichester.

A successful exhibition of art and photography **Inspired by Chichester Harbour** was held at Chichester Yacht Club in November. Works were submitted by local artists, members of the public and local schools, taking inspiration from the AONB's landscape, seascape and wildlife. The winning entries from the annual Chichester Harbour AONB Photo Competition was on display, with nearly 700 people voting for the 'People's Prize'. The exhibition was hosted by Chichester Harbour Conservancy and supported by The Friends of Chichester Harbour and Pallant House Gallery.

The Conservancy produced two **short films** to highlight the special qualities of the AONB and the role of the Conservancy. The films are available on the Conservancy's website, and DVD copies can be shown at talks and events.



Sue Gilson



With support from the Friends of Chichester Harbour and West Sussex County Council, the Conservancy has improved 670m of **public footpaths** in the AONB during the past year. The Friends of Chichester Harbour contributed over 220 volunteer hours to restore the woodland path through Salterns Copse, and a low-lying path at Westlands Estate. Two contractor projects were delivered to improve path drainage and surface between Spinney Lane and Westlands Farm (Itchenor) and to the coastal footpath south of Rookwood.

The Conservancy supported a project by the **Slipper Mill Pond** Preservation Association to repair the western bank of one of Emsworth's historic mill ponds. The repairs now safeguard the public right of way along the top of the bank for the future.

In September, the Conservancy held a successful event for 29 local **accommodation providers** to raise awareness of sustainable recreation opportunities in the AONB, promoting the Conservancy's programme of guided walks and events and trips on board Solar Heritage.

Following a pilot study in 2009, the **condition assessment of coastal footpaths** was rolled out harbour-wide, surveying 37.7km of coastal footpaths within the AONB. The project provides a detailed record of the harbour's shoreline paths including photographs and maps which will be invaluable in helping to plan the Conservancy's future maintenance programme. The results showed that 3.7km of footpath (10% of the total) are at high risk of inundation from the sea, but encouragingly the majority of footpath sections (83%) were classed as low to moderate risk.



Banner: maintaining and improving footpaths is key part of the annual work programme. The footpaths are enjoyed by many thousands of walkers each year

Top Right: surveying the footpaths, this piece of work has been invaluable for the future maintenance programme
 Bottom Right: volunteers from the Friends of Chichester Harbour put in hours of work to improve and resurface the footpath through Salterns Copse

Coastal Change

The **North Solent Shoreline Management Plan** (SMP) was developed by a partnership of 16 organisations, with the New Forest District Council as the lead authority. The final version of the SMP was adopted in December 2010 and is now available online.

Chichester District Council has completed a £450,000 **Coastal Pathfinder Project** for the Manhood Peninsula, funded by Defra. The project was designed to help communities adapt to coastal change, and included a Destination Management Plan, Integrated Coastal Zone Management strategy, Coastal Literacy programme, and coastal grants scheme.

The **East Head Coastal Issues Advisory Group** continued to meet throughout 2010 to agree the process for adaptive management of the mobile sand dune feature at East Head. The group has reached consensus about the 'trigger points' for further intervention, and reached agreement on the need for a study to determine the need for a geotextile sill to stabilise the most vulnerable section of the spit.

The Environment Agency has started work on the new **Emsworth to East Head Flood and Coastal Risk Strategy**, filling the current gap in the coastal policy framework for the Harbour's shoreline.

Chidham and Hambrook Parish Council successfully completed a project to raise the **Chidham Tide Bank** to prevent coastal flooding at Chidham Lane. The tide bank was in poor condition and had been overtopped by high tides. The project was supported by West Sussex County Council and Chichester Harbour Conservancy.

Banner: a process for adaptive management of East Head has been agreed. Photo by Mags Fisher

Below: a section of the successful Chidham Tide Bank project which will help prevent flooding





During year six of the Chichester Harbour AONB Sustainable Development Fund £50,833 was awarded to seven projects throughout the AONB. These grants supported projects with a total value of £413,794.

Project	SDF Grant	Total Project
Slipper Mill Pond West Bank Repairs	£10,000	£74,589
Fishbourne Past Environments	£5,000	£8,740
Eames Farm Education Centre	£25,000	£279,250
Uncovering Warblington's Roman Past	£1,289	£1,447
Tuppenny Barn Sustainable Education Building	£5,000	£19,924
Action in Rural Sussex Intergenerational Project	£2,044	£4,844
CYC Centre Ground Source Heating	£2,500	£25,000
TOTAL	£50,833	£413,794



Intergenerational Project

'The day often ends with handshakes and hugs as friendships and understanding have developed. The first school we worked with set up a letter writing scheme to continue the friendships that had developed' Gary James

Tuppenny Barn

Plans (banner) for a sustainable education building on an organic farm can now go ahead thanks to a grant from the SDF



Uncovering Warblington's Roman Past

'the initial research objectives were achieved - due largely to the Conservancy's .. generous grants for the purchase of a theodolite and a magnetometer' Jonathan Dicks



Eames Farm Education Centre

The new centre features a 100m² education room, a small office and storage space. The courtyard has been landscaped and a feature native tree planted. The Stables was officially opened on 11 May 2011 by Louise Goldsmith.

Facts & Figures

Chichester Harbour Monitoring Indicators

Number of student sessions delivered	8,822
Number of school trips hosted	256
Number of events delivered through the Activity Programme	68
Number of people attending Activity Programme events	2,895
Number of talks given to community groups	24
Number of Friends of Chichester Harbour work parties	44
Planning applications received for consultation in the AONB	314
Length of hedgerow planted in the AONB	780m
Area of woodland planted in the AONB	2.6ha
Public trips operated on Solar Heritage	139
Public trips operated on Terror	39
Number of press releases issued	19
Incidents attended by Harbour Patrol	270
Number of bags of litter collected by volunteers	251
Southern Marsh orchid count at Fishbourne Meadows	330
Length of footpath repaired or improved in the AONB	670
Number of website visitors to www.conservancy.co.uk	142,051



'Our skipper and crew had an encyclopedic knowledge of the harbour and stories about the many boats we saw and their owners. They brought the whole harbour to life and I am looking forward to my next sail.'

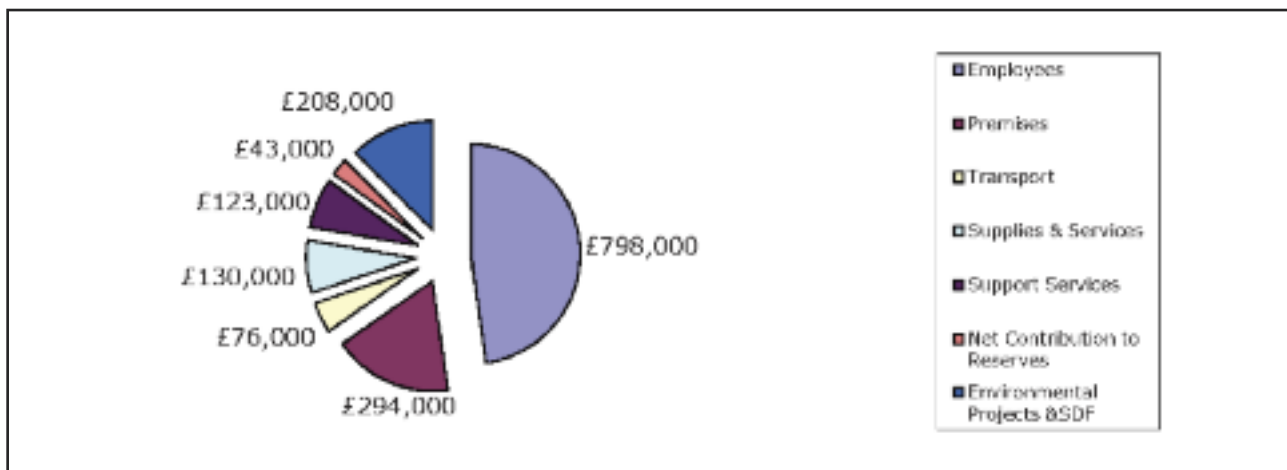
Ted Toovey, passenger on Terror

Financial Summary

The financial summary relates to Chichester Harbour Conservancy and the income and expenditure linked to its roles of Statutory Harbour and Joint Advisory Committee for the AONB.

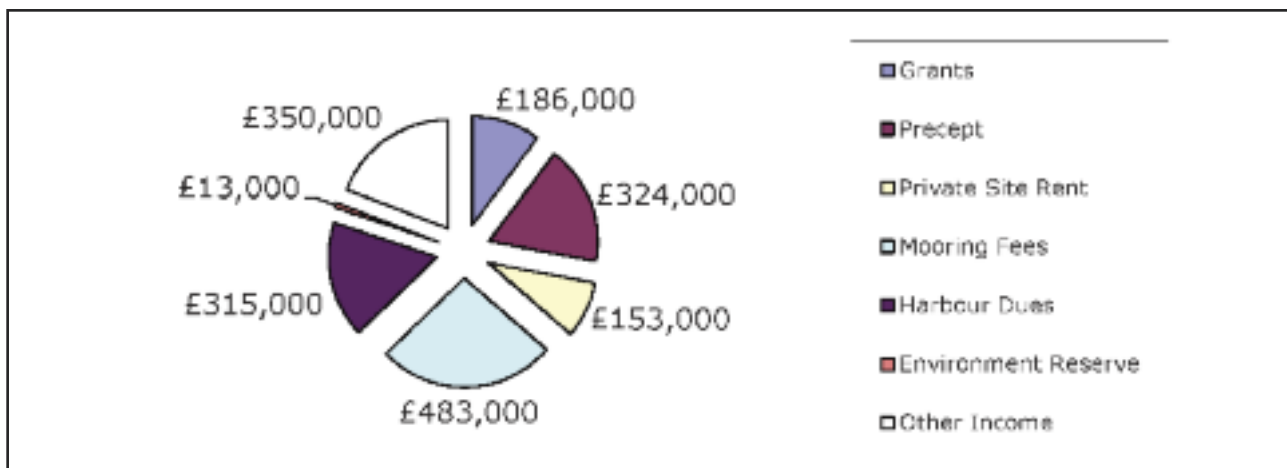
During 2010-11 Chichester Harbour Conservancy spent a total of £1,672,000. Of this £1,020,000 was spent on the Harbour. Harbour operations generated income of £1,173,000 giving a surplus of £153,000. £652,000 was spent on Environmental activities including £204,000 on the core AONB unit and £448,000 on the AONB area, of which £152,000 was spent on environmental projects and £56,000 on Sustainable Development Fund (SDF) projects.

Expenditure £1,672,000



Environmental activities were funded by precepts on Hampshire and West Sussex County Councils (£324,000), funding from Natural England for SDF, core and project work (£179,000), funds brought forward from 2009-10 (£26,000) and other grants and income (£136,000). An underspending on environmental activities of £13,000 was carried forward to 2011-12. Natural England met 61% of the cost of the AONB core unit.

Income £1,824,000



Managing the AONB

Conservancy Members 2010/11

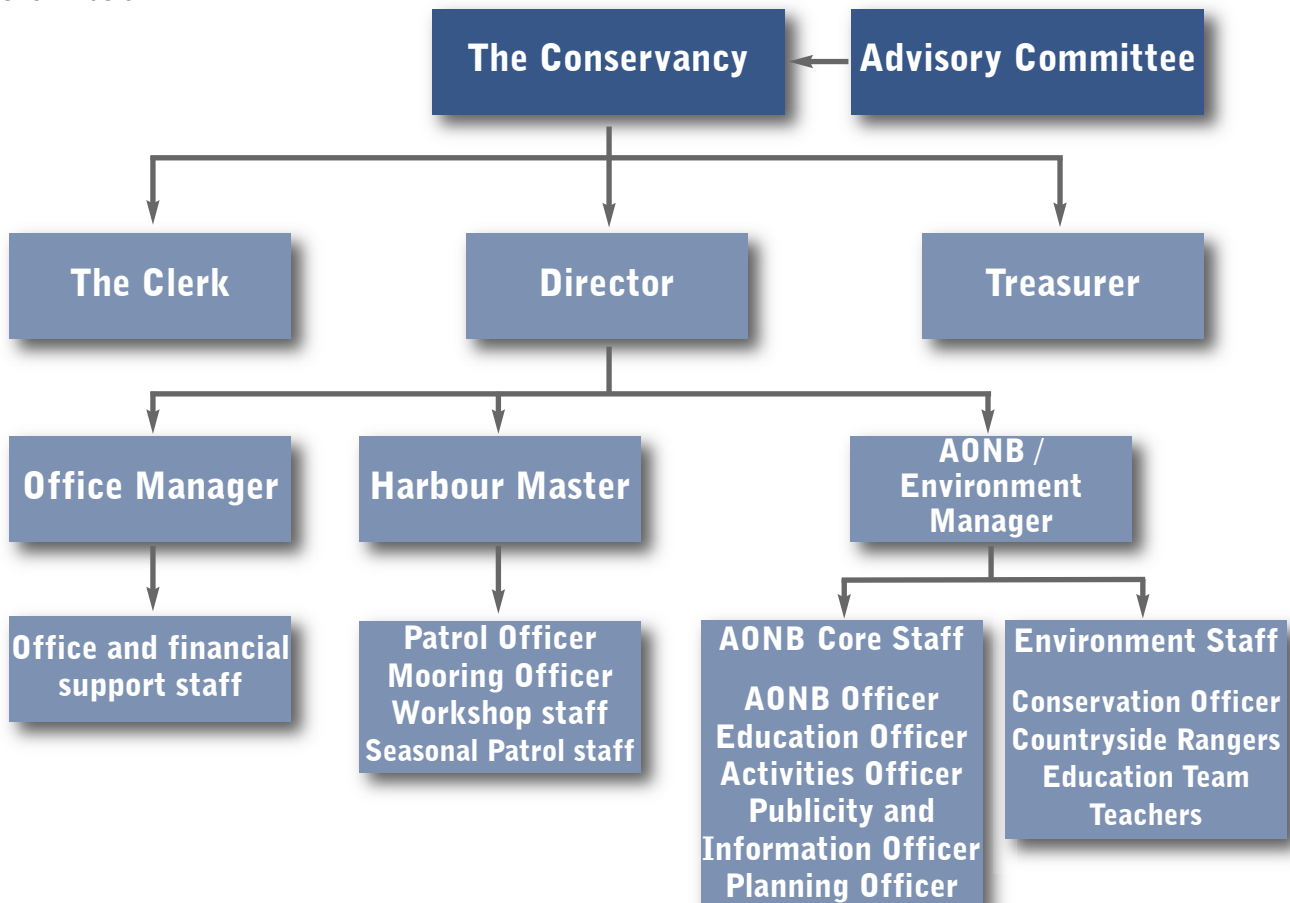
Robert Macdonald, Advisory Committee
 Steven Schrier, Advisory Committee
 Peter Taylor MBE, Advisory Committee
 Adrian Moss, Chichester District Council
 David Myers, Chichester District Council
 Ann Buckley, Hampshire County Council
 Frank Pearce, Hampshire County Council
 Tim Knight (Vice-Chairman), Hampshire County Council
 Alan Rice TD, Hampshire County Council
 Virginia Wilson-Smith, Havant Borough Council
 Jackie Branson, Havant Borough Council
 Deborah Urquhart, West Sussex County Council (WSCC)
 Bill Acraman, WSCC
 Louise Goldsmith (Chairman), WSCC
 Pieter Montyn, WSCC

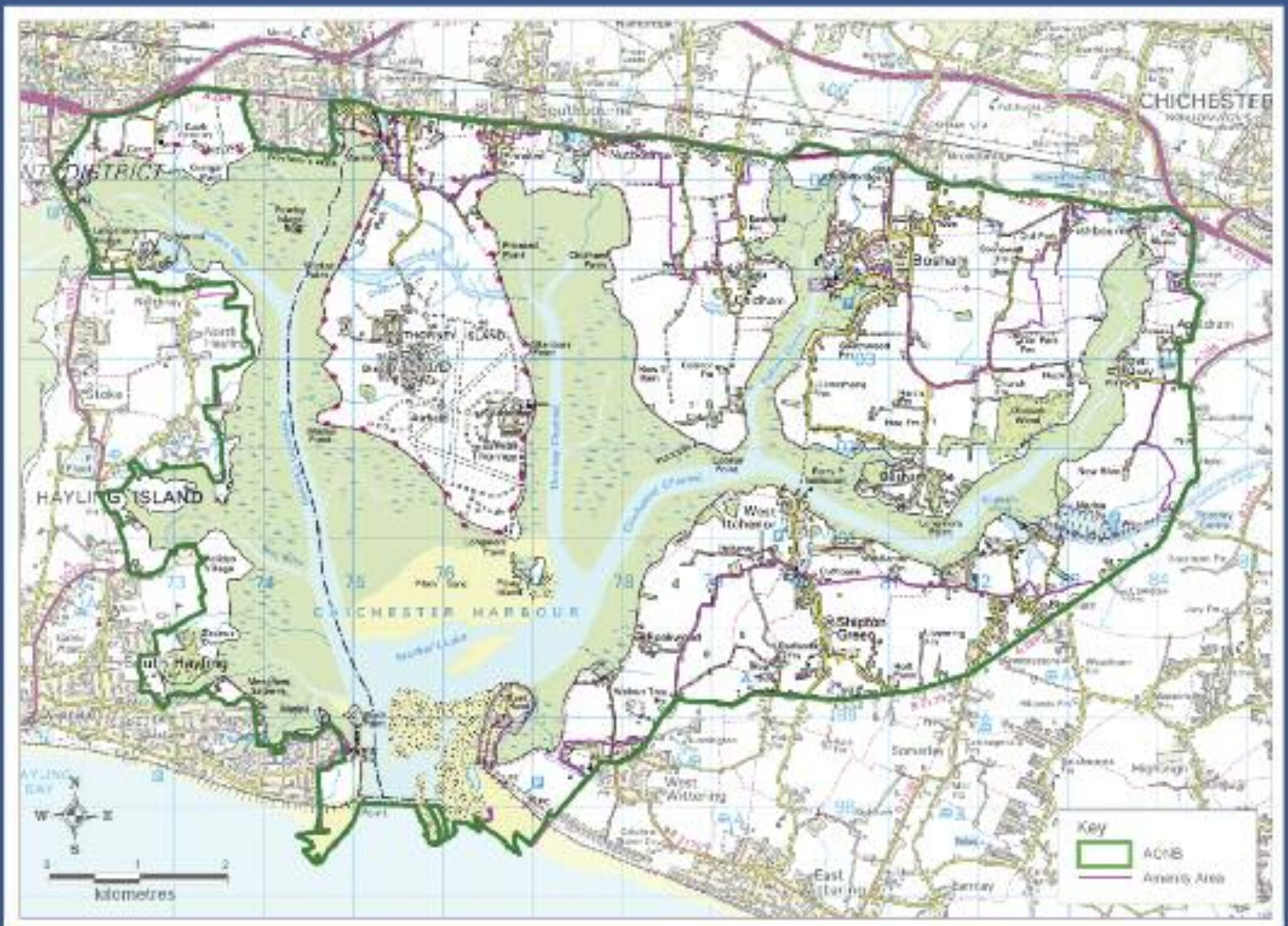
Advisory Committee Members 2010/11

Ernie King, Amateur Fishermen
 Richard Meynell, Chichester District Association of Local Councils
 Robert Macdonald, Chichester Harbour Federation (CHF)
 David Swayne, CHF
 Peter Taylor MBE (Chairman), CHF
 Nick Fox, CHF
 Michael Glanville, Commercial Interests
 Anne Collins, Emsworth Harbour Fishermen's Federation
 Jayne Field, Natural England
 Emma Kelman, Natural England
 Simon Sprackling, Farming & Landowning Interests
 Peter Henshaw, Friends of CH
 Steve Gilbert, Naturalists
 Steven Schrier (Vice-Chairman), Havant Residents
 Derek Russell, Royal Yachting Association
 Tony Delahunty, Sussex Sea Fisheries
 Ray Cuthbert, Wildfowlers

Chichester Harbour Conservancy and the AONB Core Staff Unit

The AONB core staff unit is based within Chichester Harbour Conservancy and fits into its staffing structure as shown below.





Chichester Harbour Conservancy
Harbour Office
Itchenor
Chichester PO20 7AW
01243 512301
www.conservancy.co.uk

