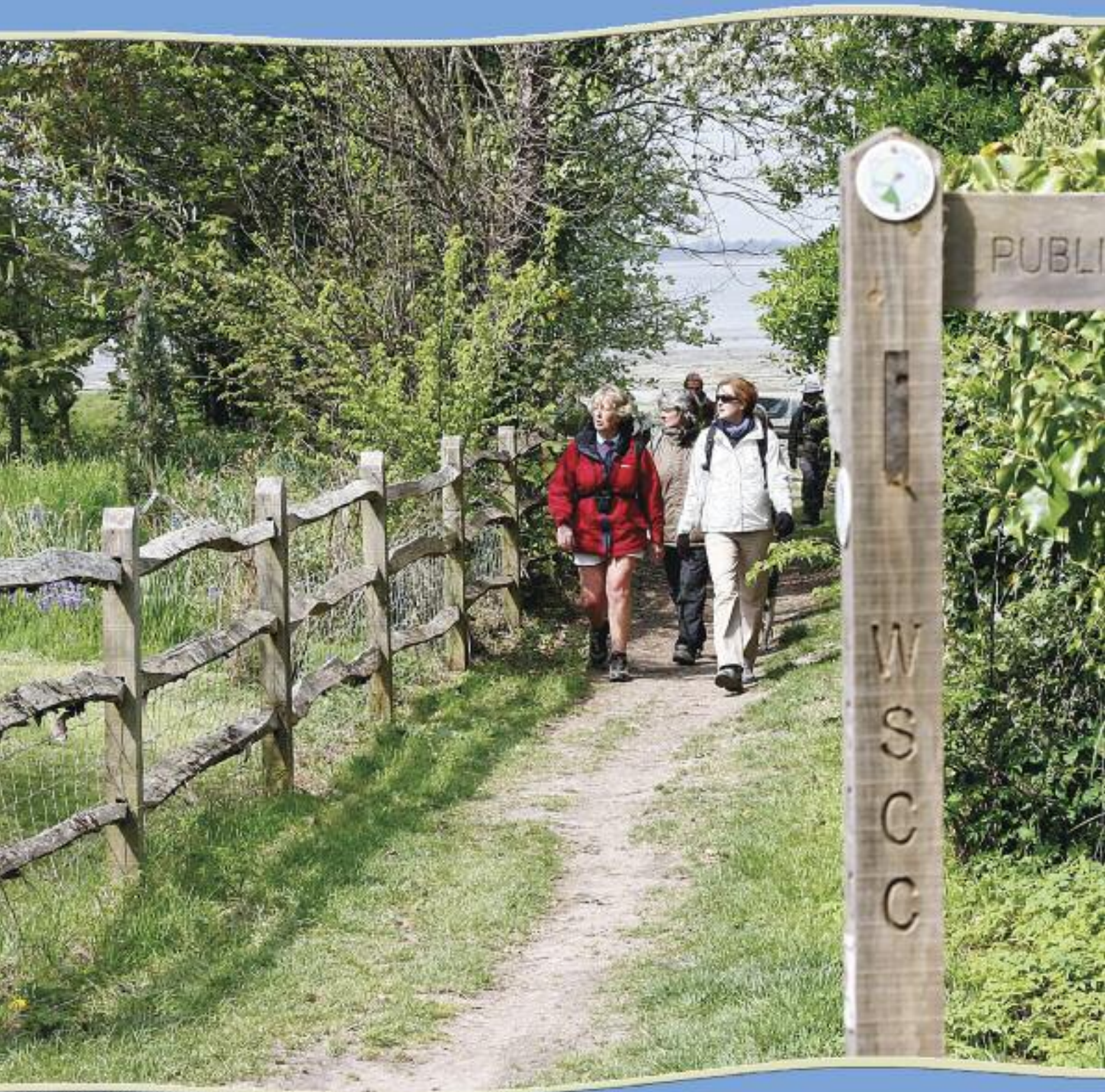




# CHICHESTER HARBOUR

*Area of Outstanding Natural Beauty*



# Management Plan

*Annual Review 2009-10*

# Chichester Harbour Management Plan Annual Review 2009-10

## Contents

Chairman's Message	1
Introduction to Chichester Harbour AONB	2
On the Water	3
Wildlife	4
Landscape	5
Heritage	6
Planning and Development	7
Activities and Learning	8
Access and Recreation	9
Coastal Change	10
Sustainable Development Fund	11
Facts and Figures	12
Financial Summary	13
Managing the AONB	14

### Chairman's Message

*The evocative and ever-changing scenery of Chichester Harbour makes this a magical place. Depending on the weather and tide, each experience is different. Increasingly, the harbour provides an oasis of calm and tranquillity on the urbanised south coast. However, continued pressure from the requirement to build more houses in the South East is putting a strain on this fragile natural resource. The Conservancy and its partners have become increasingly concerned about the impact of increased recreational disturbance on the harbour's protected wildlife, and of impacts of increased demand for sewage treatment on the water quality of the harbour.*

*The launch of the AONB Management Plan in April 2009 provides exciting opportunities over the next five years, but comes with financial uncertainty in the face of public sector cuts. Whatever the outcome, the Conservancy is in a key position to continue to develop and deliver high quality and innovative projects to benefit the AONB, with the support of our partners and AONB community.*

*I hope that you enjoy the first Annual Review for the Chichester Harbour AONB Management Plan 2009-14. Producing the new Management Plan gave us the opportunity to change the format of our annual report and to provide more information on some of the highlights of the past year. The Action Summary Tables have been compiled separately and will be available to view online.*

Councillor Louise Goldsmith, Chairman,  
Chichester Harbour Conservancy, June 2010

# Introduction to Chichester Harbour

Chichester Harbour was designated as an **Area of Outstanding Natural Beauty** in 1964 in recognition of its unique coastal environment. The AONB is the smallest in the south east, covering an area 74km<sup>2</sup> and crossing the county boundary between Hampshire and West Sussex. It has a population of 8,351, with nearly 500,000 people within 10km of its boundary, and 1.5 million visitors a year.

Chichester Harbour Conservancy is a unique organisation acting as both the statutory Harbour Authority, and the Joint Advisory Committee (JAC) for the AONB. The Conservancy works closely with partner organisations, landowners and local interest groups to conserve and enhance the natural beauty of the AONB.

Chichester Harbour Conservancy has taken the lead role on behalf of West Sussex and Hampshire County Councils, Chichester District and Havant Borough Councils to produce and review the **Chichester Harbour AONB Management Plan**. The Plan provides a framework for the Conservancy and its partners to deliver integrated and coordinated actions for the management of this nationally and internationally importance protected landscape over the next five years.

Chichester Harbour AONB is one of 47 Areas of Outstanding Natural Beauty in England, Wales and Northern Ireland, and forms part of a wider **family of nationally protected landscapes** which includes National Parks. There are nine AONBs and two National Parks wholly or partly within the South East of England covering 35% of the region.



Chichester Harbour is part of the family of nationally protected landscapes including AONBs and National Parks.

The Conservancy's environmental work is funded by a precept from both County Councils, and by AONB single pot grant funding from Natural England. The work of the Harbour Authority is funded through the collection of harbour dues and moorings fees.





The Conservancy carried out a dredge at **Sandhead Bank** in February 2010 to remove 2,000m<sup>3</sup> of material. This gives a new minimum depth over the bank of two metres below Chart Datum, widening the navigable channel and releasing the bottle neck effect past the East Head anchorage. Together with changes to the navigation marks, the project has helped to de-conflict anchored and passing vessel traffic, and greatly increased the area of navigable water.

Together, the Conservancy and Chichester District Council have tested **water quality** in the harbour over the last year. Throughout the summer months, water quality was good or excellent, but since November 2009, testing consistently found poor water quality at some sites. The results showed a clear link to storm discharges from the Apuldram Waste Water Treatment Works (WWTW). During periods of high rainfall or high ground water conditions, excess sewage is passed through a screen and discharged directly into the harbour. Over the past year, the total duration of recorded discharges was 108 days. Of these, 107 days were between 26 November 2009 and 31 March 2010 – 84% of the time.

The Conservancy and its partners are gravely concerned about the public health implications for harbour users, and the ecological impacts on the designated site. The increased demand for sewage treatment from urban development in the Chichester District will put extra pressure on the treatment works. The Conservancy and Chichester Harbour Federation are working with Natural England, the Environment Agency and Southern Water to review the consents and licensing procedure for Apuldram WWTW.

The **Get Afloat! Fund** helped disadvantaged children and adults to take a boat trip in Chichester Harbour onboard the solar powered catamaran, Solar Heritage. Ten trips were run in 2009-10, sponsored by the Friends of Chichester Harbour with additional sponsorship from four local businesses. School visits were supported by a teacher from the Conservancy's Education Service. Recipients included Barncroft Infant School, Action in Rural Sussex isolated elderly group and two groups of teenagers with special needs.

The **Marine and Coastal Access Act** came into effect in November 2009 and will impact on the management arrangements for the harbour. The new Marine Management Organisation (MMO) will replace the licensing and consenting role of the Marine and Fisheries Agency for all maritime projects including minor dredging and harbour works. The marine planning role of the MMO is still evolving, as is the way in which the new marine plans will interface with the existing terrestrial planning framework. How they will integrate with Estuary, AONB, Shoreline and other Management Plans is uncertain at this stage. It will be a complex task and at the local level, the Conservancy and Management Plan partners will be involved to safeguard the interest of the harbour and AONB.

The newly formed Inshore Fisheries Conservation Authorities (IFCA) will replace the current Sea Fisheries Committees. They will have different boundaries and a wider remit, particularly relating to the environment and the conservation of fish stocks.



Banner: the Harbour Patrol work long hours during the boating season helping mariners afloat

Right: Vintage work boat Terror is back at work. The boat is used for public sailing trips from Emsworth during the summer months

The **Solent Seal Tagging project** produced some exciting results. Five Harbour Seals were fitted with tags using GPS and cell phone technology by a team from the Sea Mammal Research Unit at St Andrew's University. The tags gave a fascinating insight into the seal's movements. The project also included recording sightings, counts at the main haul-out sites, seabed surveys in the main feeding areas, establishment of a photo-identification database and the development of educational resources. The joint Conservancy/Wildlife Trust South East Marine Programme, was supported by Natural England, Sita Trust, Friends of Chichester Harbour and Sussex Sea Fisheries Committee.

Consultants have analysed data from three years of field work for the **Wader Roost and Brent Goose Strategy**. This study will identify the important sites for waders and Brent Geese throughout the Solent. The project will also characterise what makes a site important and thereby provide advice on the creation of new sites in the future.

The **Solent Disturbance and Mitigation Project** is underway to look at the potential impact of recreational disturbance on the Solent European Marine Site, primarily on the European Special Protection Area (SPA) bird species. Field work and modelling have been used to determine the current effect of disturbance upon the SPA birds of the Solent. Predictions can then be made on the potential effect of an increasing population and propose a suite of suitable mitigation measures to inform the Local Development Framework process.



The **Goose Watch** volunteer scheme to monitor the movements of Brent Geese around the AONB got off to a flying start. Over 10,000 visit the harbour each winter - around 5% of the total population. The Geese are regularly counted on the shoreline as part of the Wetland Bird Survey. Goose Watch now completes the picture of which inland areas are favoured by the Geese. This helps inform a conservation strategy and provides vital information when responding to planning consultations.

**Salterns Copse** ancient woodland has been fenced with traditional chestnut cleft post and rail to prevent disturbance and improve the appearance of the site boundary. The woodland is managed in a traditional way by coppicing, which encourages a large variety of woodland plants and flowers including Common Spotted Orchid, Wood Anemone, Dog's Mercury and Bluebells. The woodland is also used to support the Conservancy's education programme. The public can enjoy views of the wood by the popular Salterns Way cycle route and a well used permissive shoreline path. The project was funded by Natural England, Chichester Harbour Conservancy and the Friends of Chichester Harbour.

A derelict **bird hide** at Cobnor Point was demolished and rebuilt by an enthusiastic team from the Friends of Chichester Harbour, guided by the Harbour Rangers. The new hide is now open, to enjoy the views over Nutbourne Marshes, and contains information on the birds that might be spotted. It is fitting that the new hide is dedicated to the Conservancy's first conservation warden, Joan Edom, who would sit for days at a time with her sandwiches and binoculars, guarding nesting birds.

**Fishbourne Meadows** was grazed last summer by a herd of 14 young beef cattle under licence to a local grazier. The cattle help to maintain the wet grassland habitat and encourage the Southern Marsh Orchid population to thrive. The cattle are part of the Three Harbours Beef scheme, a cooperative which delivers a high quality product whilst benefiting both farmers and wildlife in the AONB.

---

Banner: Woodland management work at Salterns Copse will help wildflowers to flourish

Left: Tags provided useful information on the seals habits

# Landscape

An eight acre site known as **Maybush Copse** was successfully purchased by Chichester Harbour Trust on behalf of the local community with funding support from Chichester Harbour Conservancy, Chichester Harbour AONB Sustainable Development Fund, and community fundraising. The Maybush Copse Friends has been set up to create a new community woodland at the site, steered by a committee of local residents, parish council representatives, Chichester Harbour Trust and the Conservancy.

Natural England produced a practical guide on the **Duty of Regard** for statutory landscape designations for relevant authorities whose activities affect AONBs. It is hoped this will reinforce responses made through the Local Development Framework process to ensure future development is not harmful to the special qualities of Chichester Harbour AONB.



8,000 saplings were planted throughout the AONB as part of the annual **woodland and hedgerow planting scheme**. The scheme was funded by the Friends of Chichester Harbour and Natural England, to enhance the farmed landscape of the AONB. Much of the planting was carried out by volunteers from the Friends of Chichester Harbour. Of these, 3,000 saplings were planted at **Thorney Island** on an 18-acre disused airfield in a partnership event with 40 volunteers from five organisations. The trees were provided by Chichester Harbour Conservancy, with funding from Natural England and the Friends of Chichester Harbour.

**Landscape improvements at Langstone.** The electricity pylon, poles and cables that used to cross the old Langstone railway bridge have been removed, resulting in a marked improvement in the landscape.

---

Banner: Maybush Copse, a new community woodland  
Above: Volunteers helped plant 8,000 saplings  
Left: The view from the Langstone bridge has been much improved by the removal of a pylon

Thorney Island is home to two regiments of the Royal Artillery and has a young and transient population. The **Thorney Island Heritage and Conservation Project** aimed to develop a sense of place for those living on the Island. A variety of practical projects have been designed to involve residents in activities which will foster social cohesion and local identity, with a focus on heritage, conservation, food, and wildlife. These included a family activity to study a Second World War pillbox, and a project to repair a bird hide attached to a Second World War gun emplacement.



The Chichester and District Archaeology Society carried out an active programme of **archaeological field work** over the past year, including monitoring of sites at risk through the condition assessment programme. A repeat survey of the Emsworth Oyster Beds showed erosion of up to 10cm in some areas. Field walking was carried out at two sites during the winter – one producing a number of worked flints and a fine borer/piercer tool. Plans are developing to carry out an excavation at the Roman Villa site near Emsworth in 2010.

A draft paper was produced by the Hants and Wight Trust for Maritime Archaeology on the **Wadeway** investigation for submission to the Proceedings of the Hampshire Field Club and Archaeology Society. In addition, a popular summary was written which can be used for updating the Conservancy's website and publications. This work was funded by Hampshire County Council and the Conservancy.

The **Coastal Heritage Display** at The Spring Arts and Heritage Centre in Havant is now complete. The new display area provides interactive and visual displays for children and adults including a projecting microscope, sea-life mini-aquarium and other informative displays. This permanent exhibition will be accessed by the Centre's 100,000 annual visitors, including groups from local schools. The project aims to raise awareness of the special qualities of the AONB and promote sustainable activities, and was jointly funded through Chichester Harbour AONB SDF, Chichester Harbour Conservancy, the Friends of Chichester Harbour and Langstone Harbour Board.

Banner: The Wadeway between Langstone and Hayling Island  
Left: volunteers from Chichester District Archaeology Society examining a worked flint

Below: children from Army families on Thorney Island spent the day exploring a Second World War pillbox, then created models



# Planning & Development

Havant Borough Council produced the Draft Core Strategy for the **Local Development Framework** in 2009, setting out the planning policy framework for Havant Borough until 2026. It outlines the vision for the area, sets broad policies for guiding growth, and identifies broad locations and 'strategic sites' for new housing, employment, other development and infrastructure. The Conservancy submitted a robust consultation response highlighting the lack of recognition of the AONB designation, which covers a significant proportion of the borough's coastline. Following pre-submission consultation on the basis of responses to the draft version, the Core Strategy will be submitted to the Secretary of State in the summer of 2010 pending an Examination in Public later in the year.

The Conservancy responded to Chichester District Council's **Strategic Growth Options** Document which will gather feedback on the location choices for major development in Chichester District 2011-2026. Chichester District Council must plan for 9,600 homes to be delivered between 2006 and 2026, of which 7,100 are in the south of the District. The document gives six strategic development options, including requests for a new combination of sites and a new settlement. Comments and feedback from the consultation will inform the draft LDF Core Strategy which is due out for consultation in June/July 2010.

The Conservancy has been working with Chichester District Council, Natural England and the developer to ensure an appropriate mitigation package for the residential development at the **Graylingwell Hospital site** in Chichester. The Conservancy is concerned about the impact of increased recreational disturbance on the protected site, particularly at the head of the Fishbourne Channel.

The **Landscape Sensitivity Analysis for the West Sussex Low Carbon Study** attempted to identify the capacity for landscapes in the County to accommodate wind turbines and energy crops. The Conservancy's response observed that the report did not adequately distinguish the AONB from the surrounding character areas and felt that increased weight should be given to the designation. In a flat landscape, tall features such as wind turbines are visible over great distances, so that developments in the neighbouring coastal plain may have a significant visual impact on the landscape of the AONB.

The Conservancy's Planning Officer liaised with consultants and Chichester District Council planning officers to conclude input into 2009 **Landscape Capacity Study** of the AONB. This study will feed into the Chichester District Local Development Framework.

The Conservancy made a response to the Department for Communities and Local Government on proposed changes to **permitted development rights for microrenewables**.



Banner: Newly redesigned classroom on the historic quay at Dell Quay  
Right: The AONBs flat landscape and fragile habitats are sensitive to development



# Activities & Learning

The **Living in an AONB** project aimed to raise awareness of the AONB designation amongst people who live in or near to the AONB. A 12-page booklet giving information on the AONB and sign-posting key resources was delivered to 35,000 households. The leaflet received positive feedback and generated interest in the Conservancy's publications and website. The project was funded by the Sustainable Development Fund, Friends of Chichester Harbour and the Harbour Trust.

The **'Wild and Wonderful Club'** is a new after school club for local school children, funded by the Friends of Chichester Harbour and organised by the Conservancy's education service. The project gives children opportunities to discover more about their local environment and to foster a sense of responsibility and ownership. The Club is based at Chidham Primary School and is regularly attended by an enthusiastic group of children, who have monitored changes that have occurred from winter into spring. For example, how much things have grown, which species are in flower and which insects they can find. Each week, the children report on their most wild and wonderful discovery of the week. In the longer term the Education Service aims to use this as a pilot scheme to help other local schools set up their own wildlife clubs.

The third **Earth, Air and Water** art festival culminated in an exhibition held at the Emsworth Museum in October. The open art festival invited entries from artists and photographers of all ages and abilities inspired by Chichester Harbour AONB. A series of workshops was held throughout the spring and summer, and pupils from six schools took part with special days at the classroom in Dell Quay. All entries were exhibited and available for sale at the final exhibition. The project was delivered by the Conservancy and supported by the Friends of Chichester Harbour.



The fifth annual **Festival of Harbour Walks** was held in May 2009 and enjoyed by 130 people. The four day festival organised by the Conservancy and Langstone Harbour Board took in nearly 50 miles of coastal views, including sand dunes, oyster beds and expanses of saltmarsh.

**Streamers** is a new project developed by the Chichester Harbour Education Service, based on the national data collection project *Streamwatch* for primary children. Groups of children from two local primary schools have been monitoring their local streams, looking at stream depth, temperature, profile, sediment, speed of flow and species present. They take the measurements and record the data monthly. The children have been very enthusiastic and the project has opened their eyes to the importance of water quality. The project was funded by The Friends of Chichester Harbour.

Over 400 entries were received in the 2009 Chichester Harbour AONB **photo competition**. The winning entry was a stunning view of timber posts in the sand at East Head taken by Richard Parkhouse. The People's Choice prize was voted for by over 550 people, and was won by Susanne Green's *Beach Huts*.

Banner: Primary school students join in the Streamers project, monitoring and learning about our local stream

Left: Older students were inspired by the harbour to create artworks for Earth, Air & Water

# Access & Recreation

The **Manhood Greenways Project** formed from a partnership to improve access for cyclists and horse-riders to the Manhood Peninsula. The project aims to identify and create new circular routes, linking existing rights of way on the Peninsula. The project is supported by Sustrans, Manhood Cycle Network, Manhood Bridleways Association, Manhood Riding Club, Countryside Access Forum for West Sussex, Manhood Peninsula Partnership and the Conservancy.

The Conservancy has carried out a number of **access upgrades**, funded by Natural England and the Friends of Chichester Harbour, and supported by West Sussex County Council rights of way team. These include a new path surface and sea defences at Thorney Island, footpath upgrade at Prinsted and footpath improvements on the Bosham eastern shoreline. The ongoing programme aims to secure coastal paths at risk, and promote access for people of all abilities.

The pilot **condition assessment of coastal footpaths** was completed in 2009. This pioneering work supported by the Friends of Chichester Harbour and Natural England aims to identify which of the AONB's precious coastal paths are most at risk from erosion. This will help to develop a priority system for carrying out future footpath projects. The Conservancy plans to roll out the survey harbour wide during 2010.

The AONB's first **cycling survey** was carried out to investigate the level of use of fragile coastal footpaths by cyclists. Data was gathered at three locations during peak and off-peak times to record how many cyclists are using the public footpaths, which are designated for users on foot only. The survey confirmed that cycling is a considerable problem at Itchenor, with almost a third of users (134) on an August weekend on bikes, particularly on the coastal footpath from Itchenor to East Head. Encouragingly, at the same time 257 cyclists were recorded using the Salterns Way at Apuldram. The Conservancy is working in partnership with West Sussex County Council to improve signage, structures and raise awareness of the issue.

The passing of the Marine and Coastal Access Act 2009 provided the first step in the creation of a **continuous coastal path** in England. Natural England produced a draft Coastal Access Scheme, giving details of how the new coastal access path will be implemented. The Conservancy made a detailed response to the consultation document.

---

Banner: resurfaced section of footpath south of Thorney Island Sailing Club

Below: improvements to footpath enable people of all abilities to enjoy even more of the AONB



# Coastal Change

The draft **North Solent Shoreline Management Plan** was released for consultation early in 2010. This provides the strategic framework for managing erosion and flood risk between Hurst Spit and Selsey Bill, including Chichester Harbour. The dominant policy proposed for the harbour is Hold the Line (HTL), which will allow private landowners to maintain, or apply to improve, their own defences if they so wish. Public money is unlikely to be forthcoming for sea defence works unless they meet the Government's cost / benefit criteria for public funding. The requirement for providing compensatory intertidal habitat for all frontages which have a HTL policy is incorporated into the Regional Habitat Creation Programme. The Conservancy chaired a meeting for landowners in the AONB to discuss the implications of the draft SMP for their holdings.

Chichester District Council has been awarded £450,000 to deliver a **Coastal Pathfinder Project** for the Manhood Peninsula. The funding from Defra is designed to help local communities to adapt to coastal change. The Manhood Peninsula Partnership, CoastNet and the Manhood Peninsula Steering Group will work with the Council to deliver the different elements of the project including a Coastal Literacy programme and community grant scheme.

Banner: Migratory birds fly over the harbour  
Below: Compensatory intertidal habitat is required for all frontages which have a 'hold the line' policy



The East Head Coastal Issues Advisory Group is made up of key partners with an interest in managing coastal processes at East Head. The group has funded a coastal geomorphology study, produced by Professor Malcolm Bray at Portsmouth University. This looked at the effects of recent shingle recycling activities and recent developments in terms of coastal processes, sediment budgets and stability issues at the hinge and the neck of East Head. The report concluded that the East Head sand spit is now healthier and more robust than it has been over the past ten years or so. However, hotspots where erosion is taking place indicate a shortage of sediment in the vulnerable area in front of the hinge which will need to be monitored. This work will help to inform the development of a Beach Management Strategy which will guide future management of East Head.



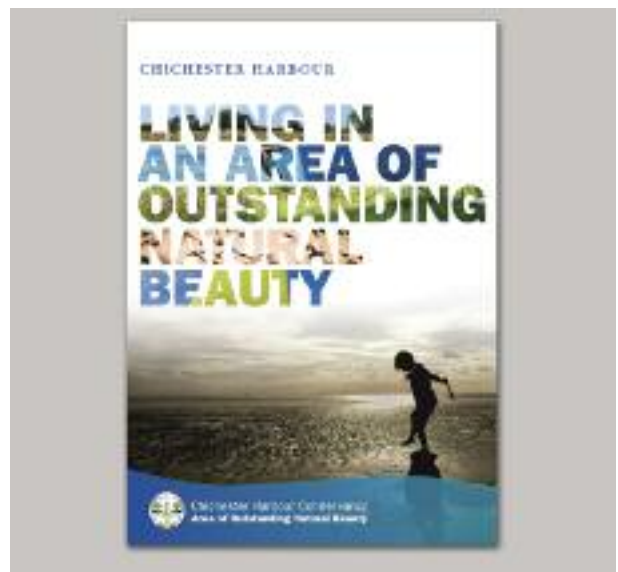
## East Head Coastal Issues Advisory Group Membership

Chichester Harbour Conservancy  
The National Trust  
Chichester District Council  
Environment Agency  
West Wittering Estate  
Natural England  
West Wittering Parish Council  
The Woodger Trust  
Cakeham Manor Estate

# Sustainable Development Fund

During the fifth year of the Chichester Harbour AONB Sustainable Development Fund £54,527 was awarded to 14 projects throughout the AONB. These grants supported projects with a total value of £792,895.

Project	SDF Grant	Total Project
Maybush Copse Community Woodland	£10,000	£215,000
Chichester Harbour, Living in an AONB	£2,000	£5,811
The Spring, Coastal Heritage Display	£7,673	£15,706
Apuldram Centre, Tomato Recycling Project	£2,000	£5,765
Cobnor Activities Centre, Solar Water Heating	£16,164	£64,971
Isolated Action Group, Days Out Plus	£1,500	£2,025
Discover Hayling, Video Reminiscences	£2,467	£5,284
Old Bridge Meadow Children's Interpretation	£1,000	£2,267
Thorney Island Heritage and Conservation Projects	£3,000	£9,882
Slipper Mill Pond West Bank Repairs: Phase 1	£2,500	£5,905
Improving Safe Access to Water Activities	£2,000	£10,000
Releasing Potential Sailing Academy	£1,245	£18,245
Fishbourne Community Project	£2,000	430,654
Thorney Island Habitat Management Project	£978	£1,380
<b>TOTAL</b>	<b>£54,527</b>	<b>£792,895</b>



Banner: Releasing Potential Sailing Academy  
 Top: Coastal Heritage Display at The Spring  
 Centre: Living in an AONB project  
 Bottom: Going afloat with the Thorney Island Heritage project

# Facts & Figures

## Chichester Harbour Monitoring Indicators

Number of student sessions delivered	8,310
Number of school trips hosted	164
Number of events delivered through the Activity Programme	78
Number of people attending Activity Programme events	1,747
Number of talks given to community groups	27
Number of Friends of Chichester Harbour work parties	42
Planning applications received for consultation in the AONB	284
Length of hedgerow planted in the AONB	780m
Area of woodland planted in the AONB	2.5ha
Public trips operated on Solar Heritage	156
Public trips operated on Terror	38
Number of press releases issued	14
Incidents attended by Harbour Patrol	538
Number of bags of litter collected by volunteers	250
Southern Marsh orchid count at Fishbourne Meadows	500
Length of footpath repaired or improved in the AONB	550m



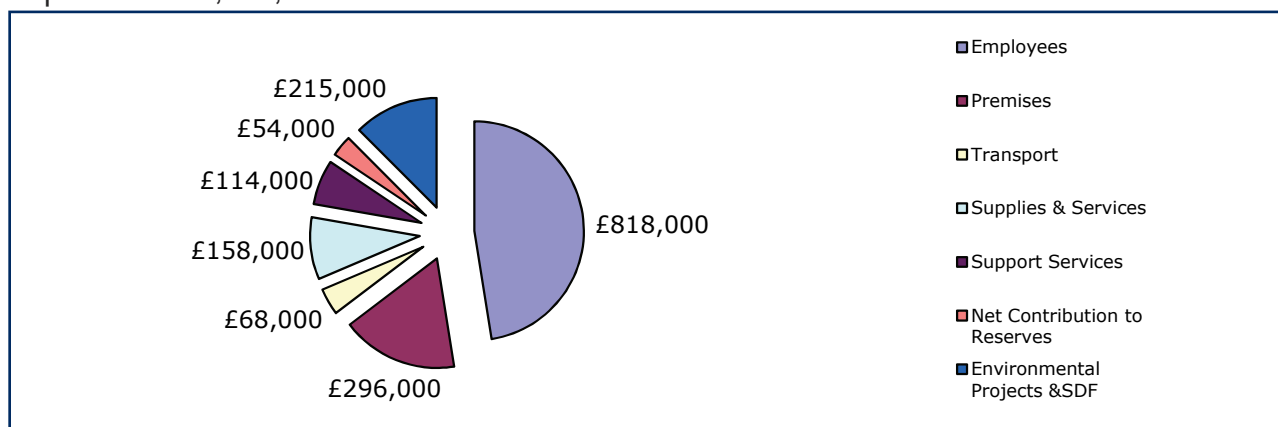
Above: Cobnor  
Below: a muddy and damaged section of footpath has been covered with a boardwalk

# Financial Summary

The financial summary relates to Chichester Harbour Conservancy and the income and expenditure linked to its roles of Statutory Harbour Authority and Joint Advisory Committee for the AONB.

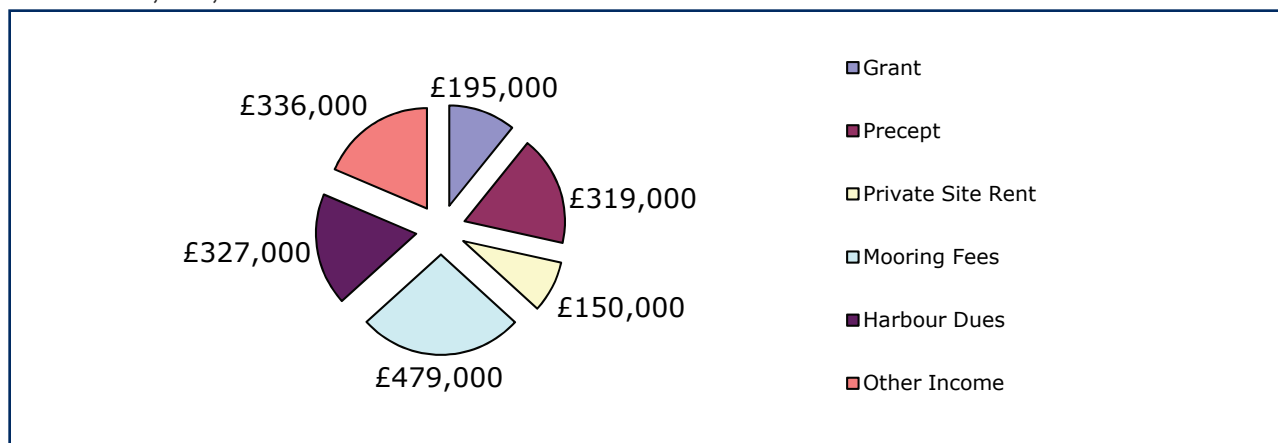
During 2009-10 Chichester Harbour Conservancy spent a total of £1,723,000. Of this £1,090,000 was spent on the Harbour. Harbour operations generated income of £1,173,000 giving a surplus of £83,000. £633,000 was spent on environmental activities including £205,000 on the core AONB unit and £428,000 on the AONB area, of which £155,000 was spent on environmental projects and £60,000 on Sustainable Development Fund projects.

## Expenditure £1,723,000



Environmental activities were funded by precepts on Hampshire and West Sussex County Councils (£319,000), funding from Natural England for SDF, core and project work (£195,000), funds brought forward from 2008-9 (£40,000) and other income (£119,000). An underspending on environmental activities of £26,000 was carried forward to 2010-11. Natural England met 60% of the cost of the AONB core unit.

## Income £1,806,000





### Conservancy Members

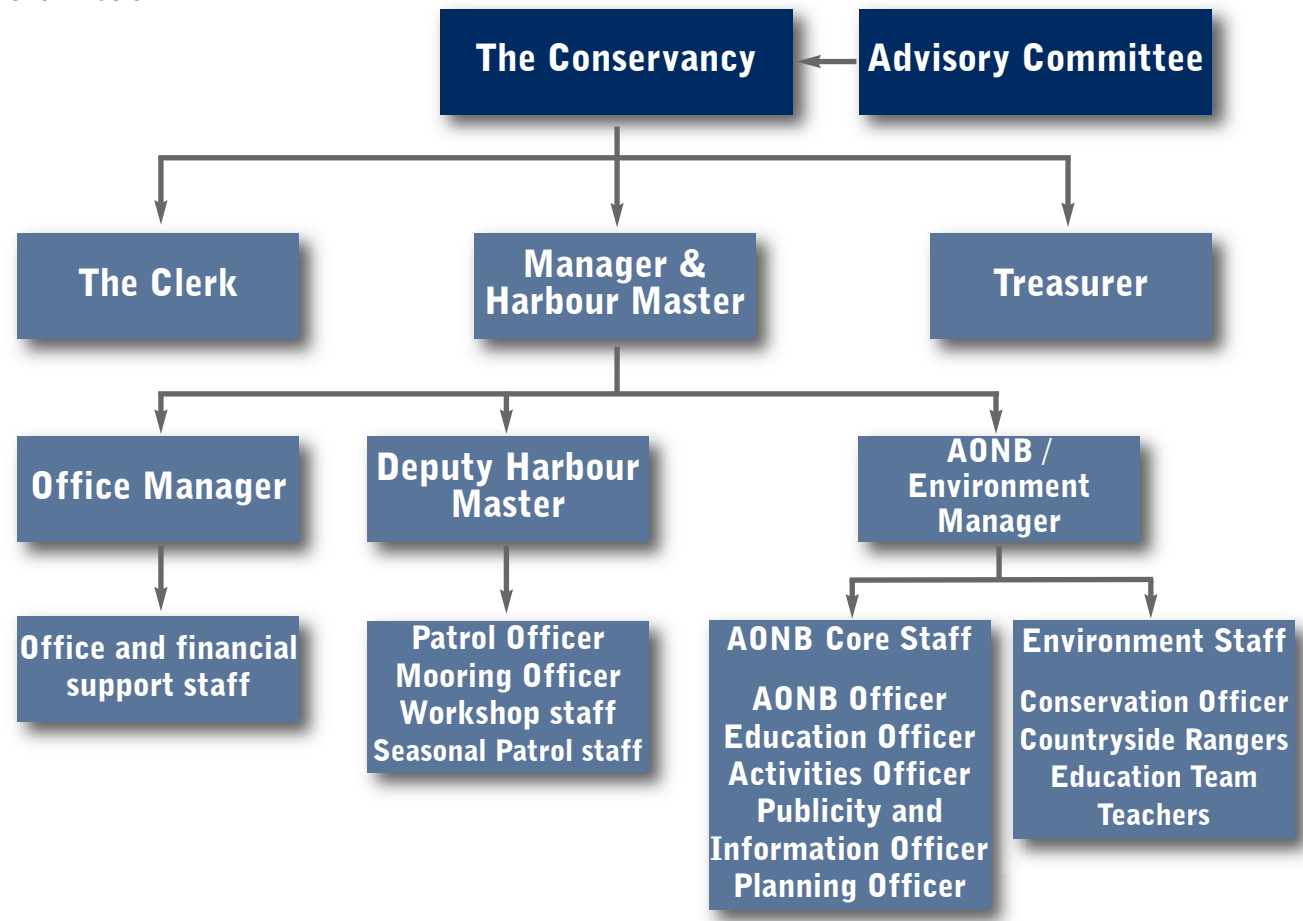
- Robert Macdonald, Advisory Committee
- Steven Schrier, Advisory Committee
- Peter Taylor MBE, Advisory Committee
- Adrian Moss, Chichester District Council
- David Myers, Chichester District Council
- Ann Buckley, Hampshire County Council
- Frank Pearce, Hampshire County Council
- Tim Knight (Vice-Chairman), Hampshire County Council
- Alan Rice TD, Hampshire County Council
- Virginia Wilson-Smith, Havant Borough Council
- Sheila Pearce, Havant Borough Council
- Deborah Urquhart, West Sussex County Council (WSCC)
- Bill Acraman, WSCC
- Louise Goldsmith (Chairman), WSCC
- Pieter Montyn, WSCC

### Advisory Committee Members

- Ernie King, Amateur Fishermen
- Richard Meynell, Chichester District Association of Local Councils
- Robert Macdonald, Chichester Harbour Federation (CHF)
- David Swayne, CHF
- Peter Taylor MBE, CHF (Chairman)
- Nick Fox, CHF
- Peter Wills, Commercial Interests
- Anne Collins, Emsworth Harbour Fishermen's Federation
- Jayne Field, Natural England
- Emma Kelman, Natural England
- Simon Sprackling, Farming & Landowning Interests
- Peter Henshaw, Friends of CH
- Steve Gilbert, Naturalists
- Steven Schrier, Havant Residents (Vice-Chairman)
- James Davis, Royal Yachting Association
- Tony Delahunty, Sussex Sea Fisheries
- Lee Freeston, Wildfowlers

### Chichester Harbour Conservancy and the AONB Core Staff Unit

The AONB core staff unit is based within Chichester Harbour Conservancy and fits into its staffing structure as shown below.





**Chichester Harbour Conservancy**  
**Harbour Office**  
**Itchenor**  
**Chichester P020 7AW**  
**01243 512301**  
**[www.conservancy.co.uk](http://www.conservancy.co.uk)**

