

VIEWS FROM VIEWPOINT SD1:Walderton Down



This spectacular view overlooks the entrance to Chichester Harbour from the Solent in the distant centre, with Thorney Island to the right, and Hayling Island beyond. to the centre left is the Chidham peninsula and parts of the Bosham channel just visible beyond the trees to the left. The approximate position of the potential development site at Hambrook (Drift Lane) and Southbourne (Breach) are marked by red arrows.

VIEWS FROM VIEWPOINT SD2: Walderton Down



At this position slightly to the east of SD1, views extend towards Southbourne and Hayling Island. The approximate positions of the potential development sites at Southbourne and Hambrook are marked with red arrows

VIEWS FROM VIEWPOINT SD3: Kingley Vale



This view from the footpath skirting the edge of Kingley Vale looks over the main harbour 'pool' with Thorney Island and the Isle of Wight beyond. The red arrow marks the approximate position of the potential Hambrook/ Drift lane housing site.

VIEWS FROM VIEWPOINT SD4: Devils Humps/ Tansley Stone Kingley Vale



This is the iconic view which was described by Tansley as his favourite view; overlooking Chichester Cathedral and Harbour from Kingley Vale. Chichester Cathedral is arrowed orange whilst other defined development sites are arrowed red.

VIEWS FROM VIEWPOINT SD5:Stoke Clump



Whilst not as high as Kingley Vale and the Trundle, a relatively popular footpath passes Stoke Clump, from which there are views towards the Cathedral and Harbour. The two red arrows identify the approximate extent of the proposed Stockbridge development site, which can be seen as green field from this location.



The position of the Cathedral is indicated by an orange arrow

VIEWS FROM VIEWPOINT SD6 The Trundle



There are spectacular views over the Cathedral city, towards the Channel and Chichester Harbour from the Trundle which is an Iron Age camp. Access is relatively easy to car parks nearby and to the grandstands at Goodwood racecourse which has similar views. This is one of the few locations where it is possible to see along the Chichester (Fishbourne) channel from the Downs. The red arrows mark the position of the Stockbridge Road development site, the orange arrow marks the Cathedral, & the blue arrows mark two other proposed development sites at West Of Chichester, & Highgrove Farm.



The panorama from the Trundle also overlooks the Bosham and Nutbourne Channels. Portsmouth is also visible in the distance. The red arrows mark the approximate positions of the potential development sites at Hambrook and Southbourne

VIEWS FROM VIEWPOINT SD7: Southbourne



This view from WSCC Footpath 247 looks across the potential Southbourne housing site towards Walderton Down on the skyline (arrowed)

VIEWS FROM VIEWPOINT SD8 : Hambrook and Chidham, Drift lane looking north west towards the Downs



Taken outside of a protected landscape. There is a generally more rural character than land to the south. Walderton Down is hidden by the trees along Drift lane, to the right of the photograph.



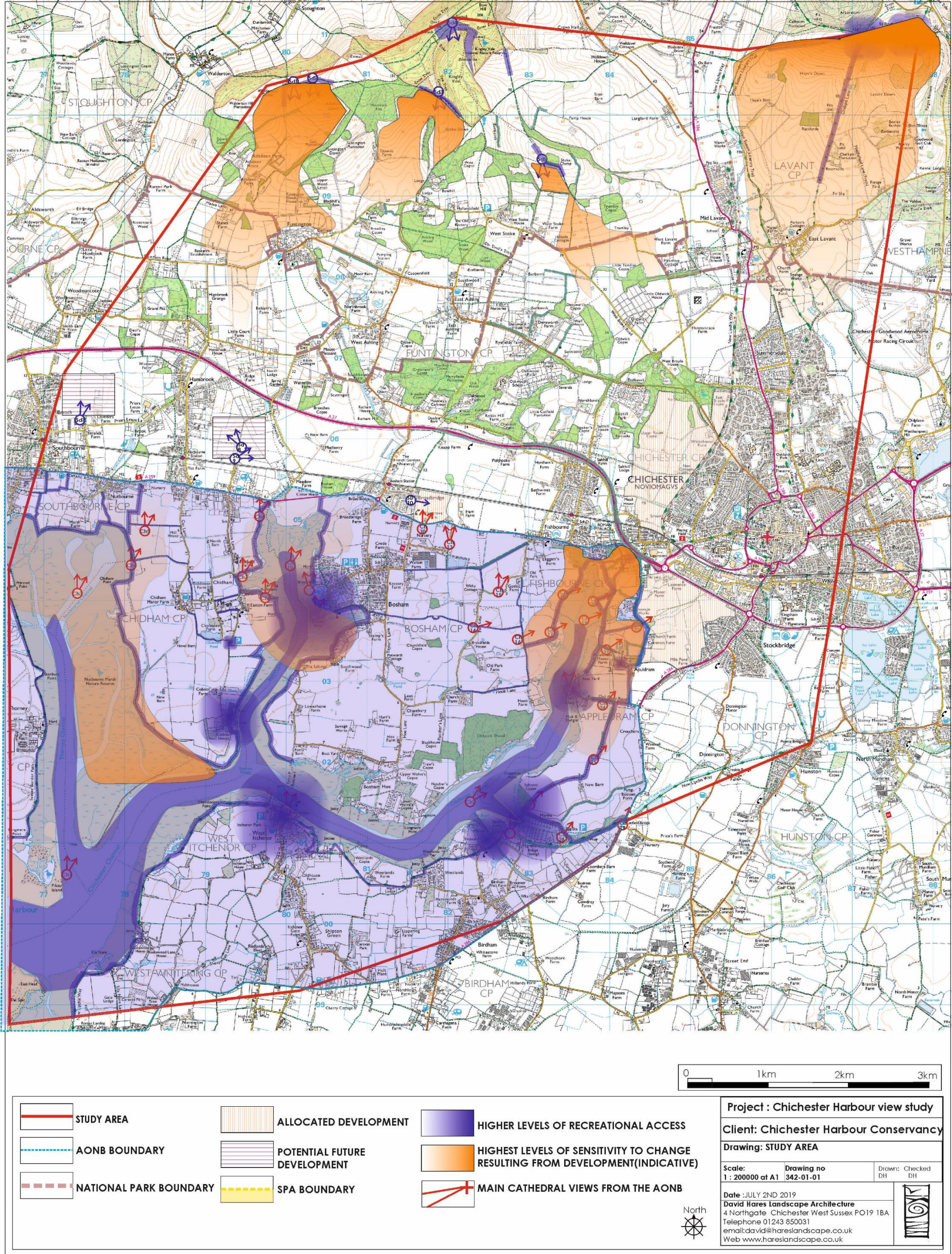
This view which is also taken outside of designated areas illustrates how land to the east of Drift lane is more open than land to the west

VIEWS FROM VIEWPOINT SD 10: Highgrove Farm looking North and East.



Although this photograph is taken outside the AONB boundary and at this point the Downs are not visible; it shows how the Highgrove farm site is located within an open landscape and consequently new development would be visible from an extensive area of the wider landscape to the north east and south, including viewpoints on the South Downs.

APPENDIX 14: MAPPING OF RELATIVE RECREATIONAL PRESSURES ACROSS THE STUDY AREA



NB . This is based on analysis of the amount of car parking, amount of boat storage and accessibility to built up areas such as Chichester eg by the Salterns Way.

References

¹ South Downs National Park Views characterisation and analysis; Land Use Consultants 2015

² South Downs Integrated Landscape Character assessment Land use Consultants 2015

³ South Downs National Park: View Characterisation and Analysis. Land Use Consultants November 2015

⁴ The Future Growth of Chichester Landscape and Amenity considerations; Land Use Consultants 2005

⁵ South Downs National Park Views characterisation and analysis; Land Use Consultants 2015