

# Chichester Harbour

Information for  
Mariners 2026

[www.conservancy.co.uk](http://www.conservancy.co.uk)



CHICHESTER  
HARBOUR  
CONSERVANCY

# Remember to pay your harbour dues

All vessels have a statutory obligation to pay harbour dues in Chichester Harbour.

This includes sailing boats and motor vessels, tenders, paddleboards, jet skis, canoes, kayaks, SUPs, windsurfers and wing foils.

Pay Annual and Visitor Harbour Dues Online



## What do your harbour dues pay for?

Harbour dues fund the costs of running the harbour and maintaining safety for all users. Maintaining navigation marks and jetties, depth surveys, water quality monitoring and harbour safety patrols are all funded by your harbour dues payments.

More information about harbour dues and charges can be found at [www.conservancy.co.uk/on-the-water](http://www.conservancy.co.uk/on-the-water)



# Contents

Harbour Master's update	3
Harbour Safety	4
Fishing in Chichester Harbour	12
International Arrivals/Departures	14
Tide Times 2026/27	16
Chichester Harbour Area Map	20
Harbour Guide	22
Local Notice to Mariners	26
Wildlife Aware Watersports	36

## Contacts

### Chichester Harbour Conservancy

Harbour Office, Itchenor, Chichester PO20 7AW  
Tel. 01243 512301

[www.conservancy.co.uk](http://www.conservancy.co.uk) | [info@conservancy.co.uk](mailto:info@conservancy.co.uk)

Office Hours: Mon-Fri 0900-1700 (1630 Nov-March)  
A member of the patrol team will be available at Itchenor on Saturdays and Sundays throughout the summer season.

### Harbour Patrol

Tel. 01243 512301  
[info@conservancy.co.uk](mailto:info@conservancy.co.uk)

### VHF Channel 14 (156.70 mhz)

Call sign **Chichester Harbour Radio** or **Chichester Harbour Patrol**

### Harbour Office, Emsworth

Mobile 07864 915247



ChichesterHarbour



chichester-harbour



chichesterharbourconservancy



If you would like to advertise in future publications, please contact [info@conservancy.co.uk](mailto:info@conservancy.co.uk).

Keep up to date with our Weekly Navigation e-Bulletin - important information for all water users.

Sign up to receive updates every Friday during peak season April-October:

[www.conservancy.co.uk/chichester-harbour-news/newsletter/](http://www.conservancy.co.uk/chichester-harbour-news/newsletter/)



Thank you to our contributing photographers including Brian Bracher, Paul Adams, John Arnott and Shirley Rushmer.

# Meet the Harbour Team

Our team is supported by a number of seasonal staff during the peak season.



**Jo Cox**  
Harbour Master



**Adrian Karn**  
Deputy Harbour Master



**Ludo Munn**  
Lead Patrol Officer



**Finn**  
The Harbour Dog



**Jeff Riley**  
Moorings Officer



**Sam Edden**  
Harbour Support Officer



**Gill Turner**  
Receptionist



**Jenny Hinton**  
Administrator



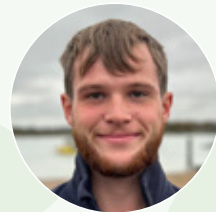
**Sam Perrin**  
Lead Harbour Technician



**Brendon McCallum**  
Harbour Technician Emsworth



**Sean Lord**  
Harbour Technician



**Josh Taylor**  
Apprentice



# Welcome

## Wishing you a warm welcome to Chichester Harbour in 2026

Whether you're a regular harbour user or discovering the harbour for the first time, we look forward to seeing you out on the water this year. It has been wonderful to see so many visitors enjoying the new walk-ashore jetty at Itchenor, which has quickly become a popular hub for overnight and short-stay berthing. We're delighted that this facility has enhanced access to the harbour and created new opportunities for visitors to explore and enjoy the area.

The harbour remains a unique environment, with its waters and shoreline forming one of the UK's National Landscapes. It is the responsibility of everyone using the harbour to help protect and preserve this special place for future generations.

Chichester Harbour is a busy and vibrant space, and we rely on all harbour users being alert and considerate to others. Whilst the harbour is predominantly sheltered and protected from all but the worst weather, there are still hazards to be aware of. This guide provides a range of useful information and resources for users of all types of craft, and further details can be found on the Chichester Harbour Conservancy website at [www.conservancy.co.uk](http://www.conservancy.co.uk).

Captain Jo Cox, Harbour Master

# THE SEA LOOKS READY. ARE YOU?

# Stay safe in Chichester Harbour

Prepare for a great day out on the water...

## 8 knots and Watch your Wash

- Stay within the harbour speed limit of 8 knots.
- Watch your wash! Reduce your speed to prevent a large wash which can:
  - Present a danger to other water users.
  - Disturb wildlife.
  - Cause excessive erosion of the shoreline.
- Slow down when passing other craft, through moorings or anchorages.
- Keep to the starboard side of marked channels.

## Be Wildlife Aware

- Avoid anchoring in seagrass or other sensitive areas, use visitor moorings or safe anchoring locations.
- Take your litter home.
- Use shoreside toilets and showers where possible and use your holding tank.
- Keep your distance when viewing wildlife.
- Find out more on page 36.

## Need Help or Advice?

Contact Harbour Patrol on 01243 512301 or VHF Channel 14 (156.70mhz).  
Call sign Chichester Harbour Radio or Chichester Harbour Patrol.

## Report an Incident

Scan here.



Water skiing, wake boarding, kite surfing e-foiling and hovercrafts are not permitted within the harbour.

## CONVERSATION STARTERS

### STAY AFLOAT

- Have you got the right flotation device for your activity – a **lifejacket** or **buoyancy aid**?
- Do you have a flotation device for **every person** on the craft?



### STAY IN TOUCH

- Do you have **AT LEAST** a phone in a waterproof pouch worn where you can reach it?
- Do you have the right means of **calling for help** for your activity/craft?
- Are you able to **identify your location**? (Encourage thinking about apps such as SafeTRX)



### STAY PUT

- Do you have an **anchor** with sufficient **chain/warp** suitable for your plans? (Suggested 6X depth as standard)
- Is it **attached** appropriately?
- Have you got a **kill cord** if you're using powered craft?



### STAY ALERT

- Are you aware of today's **forecast and tides**?
- Can you **recover** on this slipway if you plan to?
- Are you local to the area? If not, how good is your **local knowledge**?

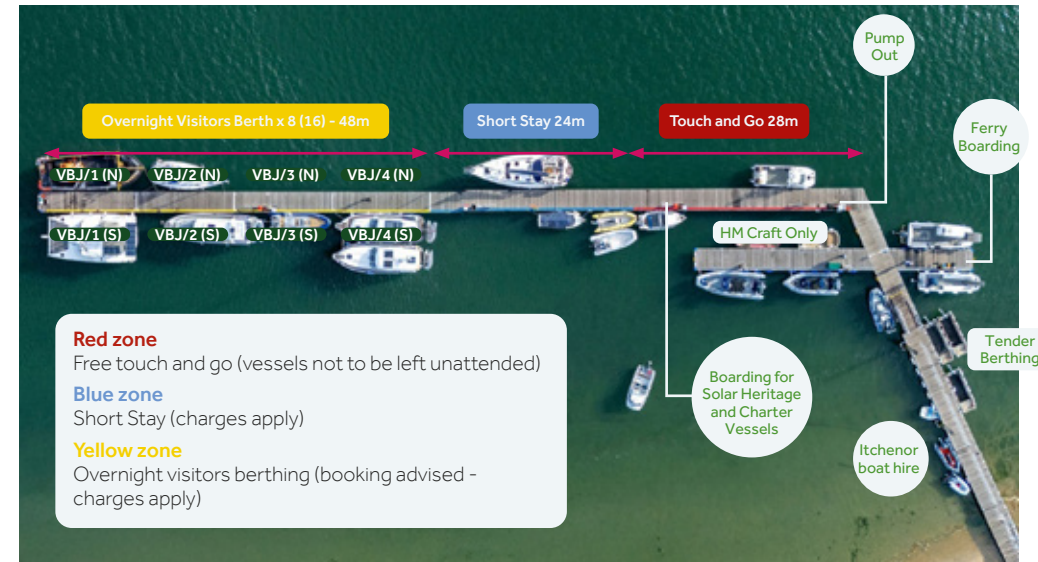


For tips and advice scan here or visit: [RNLI.org/StayAfloat](https://RNLI.org/StayAfloat)

The Royal National Lifeboat Institution (RNLI), a charity registered in England and Wales (209603), Scotland (SC037736), the Republic of Ireland (CHY 2678 and 20003326), the Bailiwick of Jersey (14), the Isle of Man (1308 and 006329F), the Bailiwick of Guernsey and Alderney, of West Quay Road, Poole, Dorset, BH15 1HZ

# Visit Itchenor!

Walk ashore facilities at Itchenor, offering short stay and overnight berthing for visitors.



**Our extended and updated jetty at Itchenor provides convenient walk ashore landing and berthing in a beautiful location.**

Itchenor jetty is accessible at all states of tide, providing access to the village of West Itchenor with facilities including a pub, café and sailing club. The village is located on the King Charles Coastal footpath, and is linked by ferry to Bosham Hoe.

**Full domestic power and e-boat charging will be available this season along with improved shower facilities enhancing the experience for all sailors and boaters.**

- Walk ashore overnight berthing for up to 16 vessels. Charged at £3.30 per metre/night.
- Short stay berthing for day visitors (maximum stay 4 hours) charged at £1.65 per metre.
- Touch and go berthing for drop off and pick up.
- Easy access to Itchenor and to Bosham Hoe Ferry.
- Boarding point for Harbour Boat Tours.
- Washrooms with private toilets and showers.
- Fully serviced (water-free).
- Full domestic power and e-boat charging (charges apply).
- Pump out facilities – free to use.
- Wi-Fi.
- Space for individual or group bookings.

Find out more and book your stay at [www.conservancy.co.uk](http://www.conservancy.co.uk)



# Water Quality and how you deal with "Black Water"

Water quality affects people and the environment of Chichester Harbour. It's the responsibility of all boat users to be aware of the rules regulating the disposal of sewage, and to take steps to adopt best practices to protect the environment and health.

## The impact of discharging raw sewage from your boat:

- Public health risk if ingested by other water users due to bacteria including E-Coli.
- Excessive nutrients in the harbour – causing macroalgae blooms and suffocating of habitats like saltmarshes and seagrass meadows.
- Impact on fish, shellfish including oysters and other marine wildlife.
- If you use chemicals to clean your toilets, these can enter the sea, causing further pollution.

## As a recreational boater, here are the steps you can take within Chichester Harbour:

### Where can I pump-out sewage?

There are several sewage pump-out facilities in Chichester Harbour. These are located at:

- Itchenor Public Jetty.
- Premier Marinas, Chichester.
- Mobile pump-out stations at Thornham Marina and Emsworth Yacht Harbour.

## What if I don't have a holding tank?

- Use land-based facilities wherever possible.
- Fit a holding tank to your boat - install a system which complies with BS EN ISO 8099. This will allow you to hold black water until you can make use of a pump-out facility.
- If you can't install a holding tank, consider installing another closed toilet system to your boat such as a chemical or composting toilet.

### The Byelaw:

Chichester Harbour Byelaw 27 (Rubbish and refuse) states that "No person shall deposit in the harbour any rubbish, refuse, ballast, stones, earth, clay or other abandoned article or material whether liquid or solid."

Find out more about Water Quality in Chichester Harbour. Visit [www.conservancy.co.uk/nature-recovery/water-quality/](http://www.conservancy.co.uk/nature-recovery/water-quality/)

If you **love your harbour**, don't treat it like a bog..



#loveyourharbour



Be part of the

# PROTECT COLLECT DISPOSE

Antifouling Initiative



## ENVIRONMENTAL BEST PRACTICE

### PROTECT THE ENVIRONMENT

- Choose the right paint & work in a well-ventilated area
- Protect the ground and surrounding area
- Minimise paint dust by wet sanding

### COLLECT PAINT DEBRIS

- Place tarpaulins under the vessel
- Use an industrial vacuum-cleaner linked to the paint scraper
- Capture old paint with 'paste-and-peel' techniques

### DISPOSE OF WASTE

- Clean up and dispose of all hazardous waste correctly

For more information, please visit:

[www.thegreenblue.org.uk](http://www.thegreenblue.org.uk)

[www.tyha.co.uk](http://www.tyha.co.uk)

[www.safeantifouling.com](http://www.safeantifouling.com)

Please address any comments or questions to [info@bcf.co.uk](mailto:info@bcf.co.uk)

## DON'T FORGET PERSONAL PROTECTIVE EQUIPMENT (PPE)



RYA

BRITISH MARINE



#ProtectCollectDispose

# Jet Ski and Personal Water Craft (PWC) safety



All Jet Skis and other PWCs wishing to launch within Chichester Harbour must register with Chichester Harbour Conservancy and pay an annual fee of £200 incorporating registration, launching and harbour dues.

In order to register a jet ski/PWC and launch from the Hard at Itchenor, jet ski/PWC operators must provide details of valid insurance and photo ID.

Please ensure you follow our guidance and operate your jet ski/PWC safely and responsibly at all times.

### Launching

Jet skis/PWC can be launched from Itchenor Hard at all states of tide.

Parking for cars and trailers (chargeable) is available in Itchenor.

### Safety in the harbour

Chichester Harbour is a busy area with multiple water users. Operators of powered craft are required to be respectful of other water users.

**Watch your wash** – reduce your speed and reduce your wash. Jet skis/PWC can create a large wash that may disrupt or endanger other water users, especially paddle craft, dinghies and moored vessels.

### Always wear a buoyancy aid.

**Carry a mobile phone or radio** – you can contact the Coastguard via 999 or via VHF radio on channel 16.

**Keep your distance** – when viewing wildlife avoid erratic movements and do not pursue wildlife when it chooses to leave.

**Get training** – a Personal Watercraft or Powerboat 2 course will teach you the skills to stay safe on the water.



The speed limit is 8 knots in all areas of the harbour

# Fishing in Chichester Harbour



Sussex and Southern Inshore Fisheries and Conservation Authorities (IFCA) work in partnership with Chichester Harbour Conservancy ensuring compliance with local and national fisheries legislation.

Chichester Harbour is an important nursery for many fish including Sea Bass – the sheltered waters provide an important habitat for young fish to grow.

## Minimum Size Byelaw

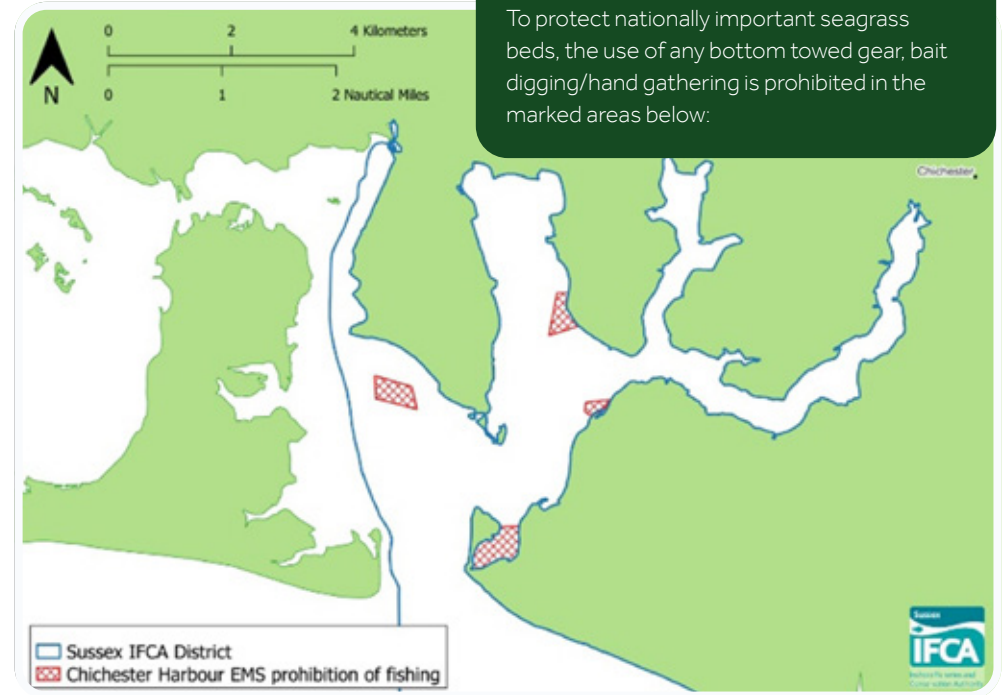
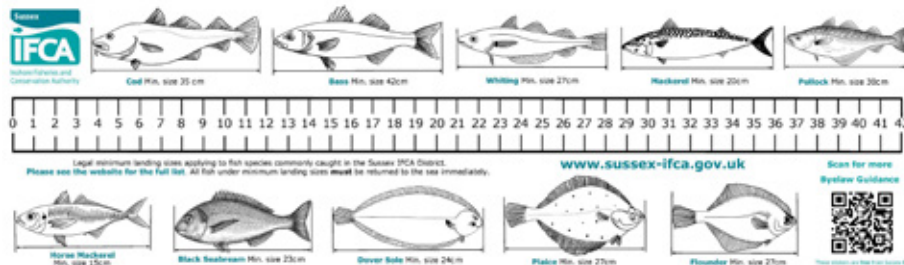
Sussex IFCA has a Minimum Size Byelaw which regulates the minimum size at which different species of fish and shellfish may be removed. These apply to recreational and commercial fishers and are intended to ensure that key species have the opportunity to grow, reach maturity and reproduce, supporting sustainable and healthy marine populations. All fishers are responsible for ensuring they can accurately measure their catch before removing it from the fishery. Pick up a measurement sticker at the Harbour Office and visit [www.sussex-ifca.gov.uk](http://www.sussex-ifca.gov.uk) for more information.

## General Fishing Restrictions:

Fixed nets are prohibited anywhere within the harbour from 1 May until 30 September.

Trawling within the harbour is prohibited all year-round.

Rod and line fishing for any fish using sand eels as bait is prohibited from 1 May to 31 October.



**European Marine Site prohibitions:**  
To protect nationally important seagrass beds, the use of any bottom towed gear, bait digging/hand gathering is prohibited in the marked areas below:

## Sea Bass Restrictions:

- It is prohibited to use a drift net to target Bass. Any Bass caught via this method must be returned to the water immediately.
- The National Minimum Conservation Reference Size for Bass is 42cm. All fish under this size must be returned to the water.
- Catching Bass from the shore is permitted in accordance with the table.
- The table details the restrictions in place year-round when fishing for Bass within Chichester Harbour.

## When can I fish for sea bass in Chichester Harbour?

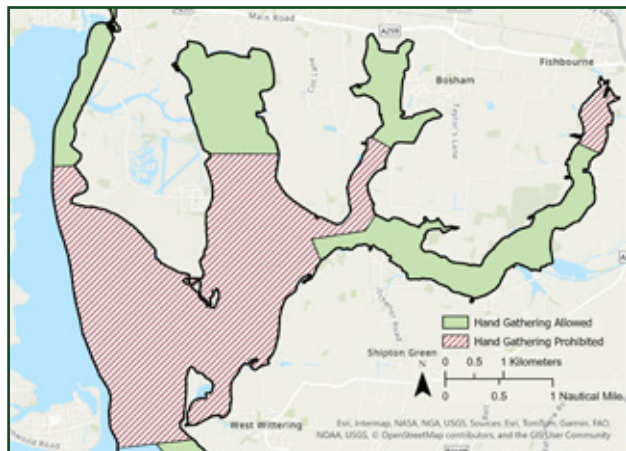
Months		
January	February	March
April	May	June
July	August	September
October	November	December

Key
2 Person per day
Catch and release only
Prohibited from a vessel

For further Information, visit [www.sussex-ifca.gov.uk](http://www.sussex-ifca.gov.uk)  
To report a suspected offence please contact [admin@sussex-ifca.gov.uk](mailto:admin@sussex-ifca.gov.uk) or call 01273 454407.

## New Hand Gathering Byelaw

Sussex IFCA has a new Hand Gathering Byelaw, regulating the collection of marine organisms from the intertidal area. Within Chichester Harbour (Sussex IFCA district only), the byelaw introduces a combination of prohibited areas, designated Hand Gathering Zones, species restrictions, and daily bag limits. Anyone wishing to collect more than the daily bag limits must hold a Hand Gathering Permit issued by Sussex IFCA.



- All hand gathering within the Chichester Harbour Management Zone is prohibited except within the four designated zones shown on the map.
- Outside these zones, no hand gathering of any marine organism is permitted.
- The Hand Gathering of bivalve molluscs under a permit can only take place from specified beds, of which there are none in Chichester Harbour. Therefore, the commercial gathering of shellfish species within Chichester Harbour is strictly prohibited.
- Seagrass and intertidal kelp species are now protected. A person must not knowingly remove, damage, disturb, or destroy seagrass (*Zostera* species) or intertidal kelp (*Laminaria digitata*, *Saccharina latissima*).
- Daily bag limits apply to all specified species. Anyone wishing to collect quantities above the daily limits must hold a valid Hand Gathering Permit issued by Sussex IFCA. Gathering above limits without a permit is an offence.

For full details of the Hand Gathering Byelaw and how it applies to Chichester Harbour, please visit our website: <https://www.conservancy.co.uk/on-the-water/angling-commercial-fishing/>

## Tell Border Force and HMRC if you are sailing to or from the UK in a pleasure craft.

If you are leaving or entering the UK on a pleasure boat of any kind, you are required to submit a pleasure craft report in advance. Border Force have digitalised the pleasure craft reporting process, making it quicker and easier to report your journey in advance of travel to and from the UK.

You should submit your report in advance, within 24 hours and up to 2 hours before departure to or from the UK. Manage your submissions online at [www.spcr.homeoffice.gov.uk](http://www.spcr.homeoffice.gov.uk)

## PROJECT KRAKEN

SEEN SOMETHING SUSPICIOUS?



## REPORT IT. LET'S SORT IT.

To report anonymously, call the Coastal Crime Line powered by Crimestoppers on 0800 011 3304. In an emergency, always call 999.



Border Force



ACTION COUNTERS TERRORISM



# TIDE TIMES 2026

ENGLAND — CHICHESTER HARBOUR (ENTRANCE)

Lat 50°47'N Long 0°56'W time zone UT(GMT) - Times and heights of high and low waters year 2026

For British Summer Time add one hour in the shaded area.

MARCH				APRIL				MAY				JUNE			
Time	m	Time	m	Time	m	Time	m	Time	m	Time	m	Time	m	Time	m
<b>1</b> 0300	1.4	<b>16</b> 0256	1.6	<b>1</b> 0359	0.9	<b>16</b> 0335	0.9	<b>1</b> 0414	0.9	<b>16</b> 0342	0.8	<b>1</b> 0507	1.2	<b>16</b> 0458	0.8
SU 1011	4.4	M 0950	4.1	W 1121	4.7	TH 1026	4.6	W 1121	4.4	TH 1026	4.7	M 1211	4.4	W 1212	4.7
M 1603	0.8	TU 1548	0.9	W 1618	0.7	TH 1551	0.7	F 1632	1.0	SA 1600	0.9	M 1721	1.5	TU 1722	1.1
2251	4.6	2221	4.4	2340	4.9	2251	4.9	F 1632	1.0	O 2334	4.6				
<b>2</b> 0343	1.1	<b>17</b> 0331	1.2	<b>2</b> 0438	0.7	<b>17</b> 0414	0.7	<b>2</b> 0452	0.9	<b>17</b> 0425	0.7	<b>2</b> 0015	4.4	<b>17</b> 0019	4.7
M 1059	4.6	TU 1024	4.4	TH 1147	4.7	F 1107	4.8	SA 1155	4.5	SU 1129	4.8	TU 0540	1.2	W 0549	0.8
M 1603	0.8	TU 1548	0.9	TH 1658	0.7	F 1631	0.6	SA 1709	1.0	SU 1646	0.8	TU 1249	4.4	W 1311	4.7
2334	4.8	2253	4.6	O		● 2330	5.0			● 2346	4.9	W 1754	1.5	W 1814	1.1
<b>3</b> 0423	0.9	<b>18</b> 0408	0.9	<b>3</b> 0005	4.9	<b>18</b> 0453	0.5	<b>3</b> 0006	4.6	<b>18</b> 0511	0.7	<b>3</b> 0049	4.3	<b>18</b> 0115	4.7
W 1136	4.8	W 1059	4.6	F 0517	0.7	SA 1150	4.9	F 0528	0.9	M 1221	4.8	W 1325	4.3	TH 1407	4.7
TU 1644	0.6	W 1626	0.7	F 1218	4.7	SA 1712	0.6	SU 1230	4.5	M 1733	0.9	W 1828	1.6	TH 1906	1.2
O		2326	4.8	W 1736	0.7			W 1743	1.1						
<b>4</b> 0007	4.9	<b>19</b> 0445	0.7	<b>4</b> 0035	4.8	<b>19</b> 0011	5.0	<b>4</b> 0040	4.5	<b>19</b> 0035	4.8	<b>4</b> 0123	4.3	<b>19</b> 0210	4.6
M 0503	0.7	W 1135	4.8	M 0553	0.7	TU 0534	0.5	M 0600	1.0	W 0559	0.7	TH 0648	1.3	TH 0732	1.0
W 1207	4.8	TH 1704	0.5	SA 1252	4.7	SU 1235	4.9	M 1306	4.5	TU 1317	4.8	TH 1400	4.3	F 1458	4.7
1724	5.0	●		1811	0.8	1754	0.6	1814	1.3	1823	1.0	1906	1.6	1959	1.3
<b>5</b> 0034	5.0	<b>20</b> 0001	5.0	<b>5</b> 0107	4.7	<b>20</b> 0054	4.9	<b>5</b> 0111	4.4	<b>20</b> 0127	4.7	<b>5</b> 0159	4.2	<b>20</b> 0302	4.5
M 0543	0.7	F 0524	0.5	M 0626	0.8	W 0616	0.5	M 0630	1.1	W 0648	0.8	F 0727	1.4	W 0826	1.1
TH 1240	4.9	F 1213	4.9	SU 1326	4.6	M 1323	4.8	TU 1340	4.4	W 1414	4.7	F 1438	4.2	SA 1544	4.6
1804	0.6	1743	0.4	1841	1.0	1838	0.8	1845	1.4	1915	1.1	1947	1.7	2054	1.4
<b>6</b> 0105	4.9	<b>21</b> 0038	5.0	<b>6</b> 0138	4.6	<b>21</b> 0139	4.8	<b>6</b> 0141	4.3	<b>21</b> 0222	4.5	<b>6</b> 0240	4.1	<b>21</b> 0353	4.3
M 0621	0.7	M 0603	0.5	M 1359	4.5	TU 1414	4.7	W 1414	4.3	TH 1510	4.6	SA 1521	4.2	SU 1630	4.5
F 1315	4.8	SA 1253	4.9	1910	1.2	1923	1.0	1919	1.5	2011	1.3	2035	1.7	2154	1.5
1841	0.7	1822	0.5												
<b>7</b> 0137	4.9	<b>22</b> 0116	5.0	<b>7</b> 0207	4.4	<b>22</b> 0229	4.6	<b>7</b> 0215	4.2	<b>22</b> 0319	4.4	<b>7</b> 0328	4.0	<b>22</b> 0443	4.1
SA 0656	0.8	SU 0641	0.5	W 0725	1.2	W 0747	0.9	TH 0738	1.4	F 0840	1.2	SU 0901	1.5	M 1022	1.4
SA 1351	4.7	SU 1334	4.9	TU 1432	4.3	W 1510	4.5	TH 1453	4.1	F 1606	4.5	SU 1609	4.1	M 1717	4.3
1914	0.9	1900	0.6	1941	1.4	2015	1.3	1959	1.7	2115	1.5	2133	1.8	2256	1.7
<b>8</b> 0211	4.7	<b>23</b> 0156	4.9	<b>8</b> 0238	4.2	<b>23</b> 0325	4.3	<b>8</b> 0257	4.0	<b>23</b> 0417	4.2	<b>8</b> 0422	4.0	<b>23</b> 0535	4.0
SU 0728	1.0	M 0720	0.6	W 0758	1.4	TH 0844	1.2	F 0822	1.6	SA 0948	1.4	M 1001	1.6	TU 1121	1.6
SU 1426	4.5	M 1419	4.7	W 1510	4.0	TH 1612	4.3	F 1541	4.0	SA 1701	4.3	M 1701	4.1	TU 1809	4.1
1944	1.1	1941	0.8	W 2017	1.7	2124	1.6	2051	1.9	2226	1.6	2238	1.8	2358	1.8
<b>9</b> 0243	4.5	<b>24</b> 0240	4.6	<b>9</b> 0318	3.9	<b>24</b> 0429	4.1	<b>9</b> 0350	3.8	<b>24</b> 0516	4.0	<b>9</b> 0519	4.0	<b>24</b> 0635	3.9
M 0757	1.3	TU 0802	0.9	TH 0839	1.7	W 1006	1.5	F 0922	1.8	SA 1055	1.5	TU 1102	1.6	W 1222	1.7
M 1500	4.3	TU 1511	4.4	TH 1600	3.8	F 1717	4.1	SA 1635	3.9	SU 1758	4.2	TU 1757	4.2	W 1909	4.1
2013	1.4	2026	1.2	2106	2.0	2255	1.8	2206	2.1	2332	1.7	2340	1.7		
<b>10</b> 0316	4.2	<b>25</b> 0334	4.3	<b>10</b> 0414	3.7	<b>25</b> 0537	3.9	<b>10</b> 0451	3.7	<b>25</b> 0620	3.9	<b>10</b> 0620	4.0	<b>25</b> 0102	1.8
M 0829	1.5	W 0853	1.3	M 0944	2.0	W 1129	1.6	M 1042	1.8	W 1157	1.6	M 1201	1.5	W 0746	3.8
TU 1540	4.0	W 1615	4.2	F 1702	3.6	SA 1831	4.0	SU 1735	3.9	M 1906	4.1	W 1858	4.3	TH 1325	1.8
2047	1.8	2128	1.6	2243	2.2			2328	2.0			2014	4.1		
<b>11</b> 0356	3.9	<b>26</b> 0440	4.0	<b>11</b> 0522	3.5	<b>26</b> 0008	1.8	<b>11</b> 0555	3.8	<b>26</b> 0033	1.7	<b>11</b> 0038	1.5	<b>26</b> 0204	1.7
M 0910	1.9	W 1020	1.6	TH 1142	2.0	W 0700	3.8	TH 1152	1.7	W 0741	3.9	W 0726	4.2	W 0852	3.9
W 1632	3.7	TH 1727	3.9	SA 1817	3.6	SU 1234	1.6	M 1840	4.0	TU 1256	1.6	TH 1257	1.4	F 1424	1.7
2137	2.1	2319	1.9			2009	4.1			2021	4.2	2001	4.4	2110	4.1
<b>12</b> 0453	3.6	<b>27</b> 0554	3.8	<b>12</b> 0033	2.1	<b>27</b> 0110	1.7	<b>12</b> 0031	1.8	<b>27</b> 0131	1.6	<b>12</b> 0134	1.3	<b>27</b> 0256	1.6
TH 1023	2.1	F 1202	1.7	M 0642	3.5	M 0843	3.9	TU 0704	3.9	W 0853	4.0	W 0831	4.3	SA 0943	4.0
TH 1744	3.5	F 1852	3.8	SU 1255	1.8	M 1333	1.5	TU 1249	1.6	W 1353	1.5	F 1354	1.3	SA 1513	1.7
				1951	3.8	2118	4.3	1949	4.2	2114	4.3	2057	4.6	2156	4.2
<b>13</b> 0019	2.3	<b>28</b> 0042	1.9	<b>13</b> 0130	1.9	<b>28</b> 0204	1.5	<b>13</b> 0125	1.5	<b>28</b> 0225	1.4	<b>13</b> 0228	1.1	<b>28</b> 0339	1.5
M 0613	3.5	SA 0725	3.8	M 0809	3.8	W 0941	4.2	W 0812	4.1	W 0938	4.1	W 0927	4.5	W 1028	4.2
F 1311	2.1	SA 1313	1.6	M 1346	1.6	TU 1424	1.3	W 1341	1.3	TH 1444	1.4	SA 1448	1.2	SU 1554	1.6
1930	3.5	2040	4.0	2053	4.1	2203	4.5	2046	4.4	2151	4.3	2147	4.7	2238	4.3
<b>14</b> 0139	2.2	<b>29</b> 0146	1.7	<b>14</b> 0215	1.5	<b>29</b> 0251	1.2	<b>14</b> 0213	1.2	<b>29</b> 0312	1.3	<b>14</b> 0319	1.0	<b>29</b> 0416	1.4
SA 0758	3.6	SU 0908	4.0	M 0905	4.1	W 1021	4.3	W 0906	4.4	F 1015	4.2	SU 1019	4.6	W 1112	4.2
SA 1401	1.9	TU 1430	1.3	W 1510	1.1	TH 1430	1.1	TH 1430	1.1	F 1529	1.4	SU 1540	1.1	M 1629	1.6
2055	3.8	2148	4.4	2135	4.4	2237	4.6	2132	4.7	2226	4.4	2235	4.8	O 2317	4.3
<b>15</b> 0222	1.9	<b>30</b> 0236	1.4	<b>15</b> 0255	1.2	<b>30</b> 0334	1.0	<b>15</b> 0258	1.0	<b>30</b> 0354	1.2	<b>15</b> 0408	0.8	<b>30</b> 0450	1.3
M 0907	3.8	M 1006	4.3	M 0946	4.4	W 1051	4.4	W 0953	4.6	W 1052	4.3	M 1113	4.7	W 1153	4.3
SU 1437	1.6	M 1456	1.1	W 1511	1.0	TH 1552	1.0	F 1515	1.0	SA 1610	1.4	M 1631	1.1	TU 1702	1.6
2145	4.1	2235	4.6	W 2213	4.7	2304	4.6	2215	4.8	2302	4.4	● 2326	4.8	2355	4.3
<b>31</b> 0319	1.1			<b>31</b> 0433	1.2			<b>31</b> 0433	1.2			<b>31</b> 0007	4.4		
TU 1049	4.5			SU 1131	4.3			SU 1131	4.3			F 0536	1.0		
TU 1538	0.9			SU 1647	1.4			SU 1647	1.4			F 1241	4.5		
2312	4.8			O 2339	4.4			O 2339	4.4			1752	1.2		

# TIDE TIMES 2026

ENGLAND — CHICHESTER HARBOUR (ENTRANCE)

Lat 50°47'N Long 0°56'W time zone UT(GMT) - Times and heights of high and low waters year 2026

JULY				AUGUST				SEPTEMBER				OCTOBER			
Time	m	Time	m	Time	m	Time	m	Time	m	Time	m	Time	m	Time	m
<b>1</b> 0523	1.3	<b>16</b> 0005	4.7	<b>1</b> 0041	4.5	<b>16</b> 0116	4.8	<b>1</b> 0123	4.7	<b>16</b> 0206	4.5	<b>1</b> 0144	4.7	<b>16</b> 0215	4.3
W 1232	4.3	M 0539	0.7	M 0612	0.9	SU 0646	0.7	M 0655	0.7	W 0722	1.1	TH 0707	0.9	W 0723	1.5
W 1736	1.5	TH 1256	4.8	SA 1313	4.6	SU 1348	4.9	TU 1349	4.7	W 1425	4.5	TH 1405	4.6	F 1421	4.2
		1801	1.0	1829	1.1	1905	0.9	1913	0.9	W 1937	1.3	TH 1929	1.0	F 1941	1.5
<b>2</b> 0030	4.3	<b>17</b> 0057	4.7	<b>2</b> 0115	4.5	<b>17</b> 0158	4.7	<b>2</b> 0201	4.6	<b>17</b> 0244	4.3	<b>2</b> 0235	4.5	<b>17</b> 0255	4.1
M 0558	1.2	W 0626	0.7	M 0649	0.9	W 0727	0.9	M 0732	0.9	W 0754	1.4	M 0752	1.2	W 0801	1.8
TH 1307	4.4	F 1343	4.8	SU 1346	4.6	M 1426	4.7	W 1427	4.6	TH					

# TIDE TIMES 2026/27

## ENGLAND — CHICHESTER HARBOUR (ENTRANCE)

Lat 50°47'n Long 0°56'w time zone UT(GMT) - Times and heights of high and low waters year 2026/27

NOVEMBER				DECEMBER				JANUARY				FEBRUARY			
Time	m	Time	m	Time	m	Time	m	Time	m	Time	m	Time	m	Time	m
1 0344	4.4	16 0323	4.1	1 0438	4.5	16 0347	4.2	1 0547	4.3	16 0450	4.2	1 0042	2.1	16 0635	3.9
0 0848	1.6	M 0834	2.0	0 0953	1.6	0 0904	1.9	0 1130	1.8	0 1012	1.8	0 0706	3.8	0 1235	1.8
SU 1602	4.2	M 1531	3.9	TU 1654	4.3	W 1557	4.1	F 1812	4.0	SA 1714	4.0	M 1330	2.0	TU 1925	3.9
⊖ 2129	1.5	⊖ 2105	1.9	⊖ 2225	1.5	⊖ 2131	1.8	⊖ 2358	1.8	⊖ 2256	1.8	⊖ 1956	3.7		
2 0450	4.2	17 0418	4.0	2 0534	4.4	17 0439	4.1	2 0645	4.2	17 0553	4.1	2 0155	2.1	17 0113	1.9
0 1017	1.8	TU 0942	2.2	0 1100	1.7	0 1004	2.0	0 1238	1.9	0 1126	1.9	0 0824	3.8	0 0756	4.1
M 1710	4.1	TU 1632	3.8	W 1754	4.1	TH 1656	4.0	SA 1919	3.9	SU 1826	4.0	TU 1430	1.8	W 1352	1.5
2254	1.6	⊙ 2220	2.0	2328	1.6	⊙ 2230	1.8	2356	1.9	2366	1.9	2118	3.9	2046	4.1
3 0557	4.2	18 0516	4.0	3 0633	4.3	18 0535	4.1	3 0104	1.9	18 0705	4.2	3 0248	1.9	18 0219	1.6
0 1132	1.8	0 1103	2.2	0 1203	1.7	0 1108	2.0	0 0751	4.1	0 1245	1.8	0 0931	4.0	0 0905	4.3
TU 1821	4.0	W 1735	3.8	TH 1901	4.1	F 1757	4.0	SU 1346	1.8	M 1944	4.1	W 1513	1.6	TH 1447	1.2
		2329	1.9	2329	1.9	2331	1.8	2033	4.0	2033	4.0	2214	4.1	2149	4.5
4 0000	1.6	19 0618	4.0	4 0028	1.6	19 0635	4.2	4 0209	1.9	19 0114	1.8	4 0328	1.7	19 0310	1.2
0 0716	4.2	0 1207	2.0	0 0742	4.3	0 1210	1.9	0 0854	4.2	0 0815	4.3	0 1019	4.2	0 1000	4.6
W 1235	1.7	TH 1840	3.9	F 1303	1.7	SA 1902	4.1	M 1444	1.7	TU 1357	1.6	TH 1549	1.4	F 1534	0.9
1948	4.1			2016	4.1			2133	4.1	2054	4.3	2256	4.3	2242	4.8
5 0059	1.5	20 0025	1.8	5 0127	1.6	20 0030	1.7	5 0302	1.8	20 0222	1.6	5 0403	1.5	20 0355	0.9
0 0836	4.4	0 0723	4.2	0 0845	4.4	0 0740	4.4	0 0944	4.3	0 0914	4.5	0 1058	4.4	0 1049	4.8
TH 1331	1.6	F 1300	1.8	SA 1401	1.6	SU 1309	1.7	TU 1530	1.6	W 1455	1.3	F 1622	1.2	SA 1618	0.6
2102	4.3	1945	4.1	2114	4.2	2008	4.3	2220	4.2	2151	4.5	2332	4.5	⊖ 2330	5.0
6 0153	1.4	21 0116	1.6	6 0222	1.6	21 0129	1.6	6 0345	1.7	21 0138	1.3	6 0436	1.3	21 0439	0.7
0 0930	4.6	0 0821	4.4	0 0930	4.5	0 0837	4.6	0 1027	4.4	0 1005	4.7	0 1132	4.5	0 1134	5.0
F 1422	1.4	SA 1348	1.5	SU 1452	1.5	M 1406	1.5	W 1609	1.4	TH 1545	1.0	SA 1655	1.0	SU 1702	0.4
2149	4.4	2040	4.4	2156	4.3	2105	4.5	2302	4.4	2245	4.7	●			
7 0242	1.2	22 0203	1.4	7 0310	1.5	22 0226	1.4	7 0422	1.6	22 0407	1.1	7 0003	4.6	22 0012	5.1
0 1008	4.7	0 0907	4.7	0 1007	4.5	0 0927	4.7	0 1107	4.5	0 1054	4.9	0 0510	1.2	0 0523	0.5
SA 1508	1.2	SU 1432	1.3	M 1537	1.4	TU 1459	1.2	TH 1644	1.3	F 1632	0.8	SU 1203	4.6	M 1217	5.1
2223	4.5	2127	4.6	2233	4.4	2156	4.6	● 2343	4.4	○ 2338	4.9	1730	0.9	1745	0.4
8 0327	1.1	23 0248	1.2	8 0353	1.5	23 0319	1.3	8 0457	1.5	23 0454	0.9	8 0032	4.7	23 0051	5.2
0 1038	4.8	0 0949	4.8	0 1043	4.6	0 1013	4.9	0 1145	4.5	0 1144	5.0	0 0545	1.1	0 0605	0.5
SU 1550	1.1	M 1516	1.1	TU 1617	1.3	W 1548	1.0	F 1718	1.2	SA 1719	0.6	M 1233	4.6	TU 1300	5.0
2254	4.6	2211	4.7	2312	4.5	2247	4.8					1804	0.8	1828	0.4
9 0408	1.1	24 0333	1.1	9 0432	1.5	24 0410	1.1	9 0020	4.5	24 0030	5.0	9 0101	4.7	24 0129	5.1
0 1108	4.8	0 1030	4.9	0 1120	4.6	0 1101	4.9	0 0531	1.4	0 0541	0.8	0 0619	1.0	0 0647	0.6
M 1629	1.0	TU 1559	0.9	W 1655	1.3	TH 1637	0.9	SA 1220	4.5	SU 1233	5.0	TU 1304	4.6	W 1341	4.9
● 2329	4.6	○ 2256	4.8	● 2352	4.5	○ 2341	4.8	1752	1.2	1806	0.6	1837	0.8	1909	0.6
0 0446	1.1	25 0418	1.0	0 0508	1.5	25 0500	1.1	10 0054	4.5	25 0118	5.1	10 0130	4.7	25 0207	5.0
0 1142	4.7	0 1114	5.0	0 1158	4.5	0 1152	4.9	0 0606	1.4	0 0627	0.8	0 0652	1.0	0 0726	0.8
TU 1706	1.1	W 1644	0.8	TH 1730	1.3	F 1727	0.8	SU 1253	4.5	M 1321	5.0	W 1336	4.6	TH 1422	4.7
		2346	4.8					1826	1.2	1852	0.6	1909	0.9	1947	0.9
1 0006	4.6	26 0506	1.0	11 0031	4.5	26 0038	4.9	11 0126	4.5	26 0201	5.0	11 0201	4.6	26 0246	4.7
0 0522	1.2	0 1202	4.9	0 0543	1.5	0 0551	1.0	0 0641	1.4	0 0713	0.8	0 0724	1.0	0 0804	1.1
W 1217	4.6	TH 1732	0.9	F 1233	4.5	SA 1245	4.9	M 1325	4.5	TU 1407	4.9	TH 1408	4.5	F 1505	4.5
1741	1.2			1804	1.4	1818	0.8	1901	1.2	1938	0.7	1941	1.0	2024	1.2
2 0044	4.5	27 0041	4.8	12 0108	4.4	27 0137	4.9	12 0158	4.5	27 0242	4.9	12 0234	4.5	27 0327	4.4
0 0556	1.4	0 0556	1.1	0 0618	1.6	0 0642	1.0	0 0716	1.4	0 0758	1.0	0 0757	1.1	0 0840	1.4
TH 1250	4.5	F 1253	4.8	SA 1307	4.4	SU 1340	4.8	TU 1359	4.4	W 1453	4.7	F 1444	4.4	SA 1551	4.2
1814	1.3	1822	0.9	1839	1.4	1909	0.9	1935	1.2	2023	1.0	2015	1.2	2101	1.6
3 0121	4.4	28 0140	4.7	13 0144	4.4	28 0230	4.9	13 0232	4.5	28 0325	4.7	13 0311	4.4	28 0413	4.1
0 0829	1.5	0 0647	1.2	0 0655	1.6	0 0733	1.1	0 0751	1.4	0 0845	1.3	0 0836	1.3	0 0923	1.8
F 1323	4.4	SA 1349	4.7	SU 1342	4.3	M 1434	4.7	W 1435	4.4	TH 1541	4.5	SA 1530	4.2	SU 1643	3.9
1848	1.4	1915	1.0	1916	1.5	2000	1.0	2010	1.3	2111	1.3	2057	1.4	⊖ 2152	2.0
4 0157	4.3	29 0242	4.7	14 0220	4.3	29 0320	4.8	14 0310	4.4	29 0411	4.5	14 0404	4.2		
0 0705	1.6	0 0742	1.3	0 0733	1.7	0 0826	1.3	0 0829	1.5	0 0937	1.6	0 0926	1.6		
SA 1357	4.3	SU 1451	4.5	M 1420	4.3	TU 1528	4.6	TH 1518	4.2	F 1631	4.2	SU 1637	4.0		
1925	1.6	2012	1.2	1955	1.5	2054	1.2	2049	1.4	⊖ 2206	1.6	⊙ 2155	1.7		
5 0237	4.2	30 0342	4.6	15 0300	4.3	30 0407	4.7	15 0355	4.3	30 0500	4.2	15 0515	4.0		
0 0745	1.8	0 0844	1.5	0 0815	1.8	0 0922	1.4	0 0914	1.7	0 1044	1.9	0 1048	1.8		
SU 1438	4.1	M 1553	4.4	TU 1505	4.2	W 1621	4.4	F 1611	4.1	SA 1727	3.9	M 1757	3.8		
2009	1.7	2117	1.4	2039	1.6	⊖ 2152	1.4	⊙ 2138	1.6	2318	1.9	2337	1.9		
				31 0455	4.5			31 0557	3.9						
				TH 1714	4.2			1210	2.0						
				2254	1.6			1834	3.7						

# Reserve a mooring in beautiful Chichester Harbour

Locations at Itchenor, Dell Quay, Nutbourne and Emsworth

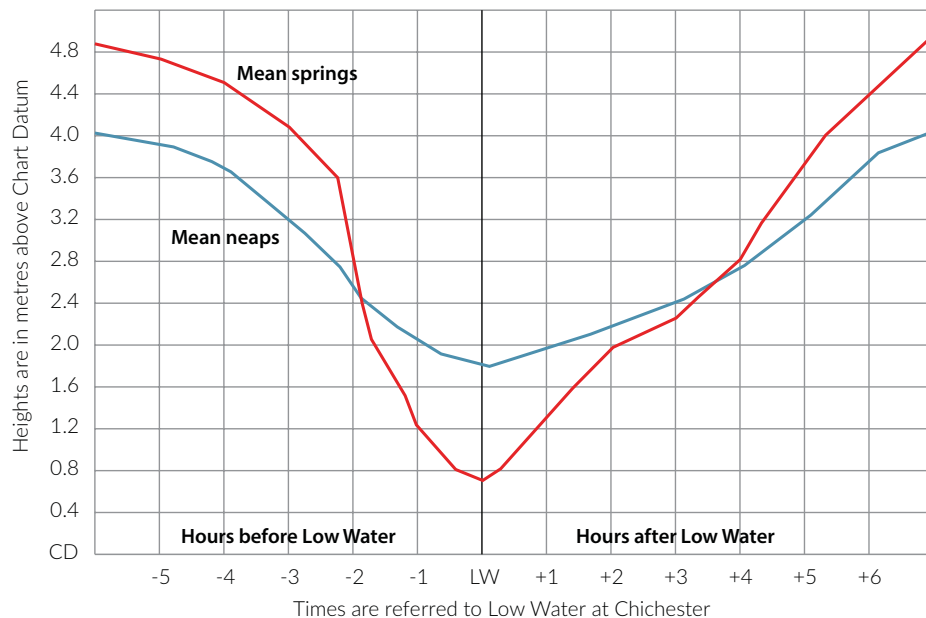
Facilities at Itchenor include electric charging points, toilets, showers and walk-ashore visitor berthing.

- Water taxi.
- Tender chains.
- Maintenance piles.
- Fresh water & pump-out.
- Our friendly team on hand to assist.

More details are available from [moorings@conservancy.co.uk](mailto:moorings@conservancy.co.uk) or call **01243 512301**.



## Rise and fall of the tide at Chichester Harbour Entrance



# Chichester Harbour

- Roads
- Railway Line & Stations
- Bus Route 700 & 52/53
- Footpaths
- Salterns Way Cycle Path
- Permissive Path
- Harbour Limits
- Navigation Marks
- Boat Trips
- Jetty
- Parking
- Marinas
- Pump Out
- Fuel
- Sailing Club
- Boatyard
- Visitor Berthing
- Anchorage
- Food & Drink
- Toilets
- Launch Point
- Watersports Hire
- Bird Watching
- Beach
- Rail Link
- Bus Link
- Shops
- Harbour Office
- Itchenor Ferry (route to Bosham Hoe)
- View Point
- Chichester Harbour Education Centre



# Harbour Guide

Discover everything you need to make the most of your time in and around the harbour

Spanning 11 square miles of sheltered water and 17 miles of well-marked, illuminated channels, **Chichester Harbour** offers easy access to the Solent and is a haven for water recreation enthusiasts. Home to over **11,500 vessels, 3,200 moorings**, and 2,000 berths across seven marinas, the harbour also hosts more than a dozen thriving sailing clubs. Along its scenic shoreline, you'll find picturesque villages perfect for exploring by boat - each offering its own charm, hospitality, and maritime heritage.

## Villages accessible by boat – harbour amenities

### Birdham

Launching site at Chichester Marina.

Fuel - both diesel and petrol available at Chichester Marina.

---

### Bosham

Public launching site with public parking, quay and visitor moorings.

---

### Dell Quay

Public launching site.

Short stay jetty provides free touch and go or short stay up to 4 hours (charges apply).

---

### Emsworth

Emsworth Harbour Office is open between Easter and 31 October but not staffed continuously.

Tel. **07864 915247** or contact the Harbour Office at Itchenor.

There is a public launching site available at Emsworth.

**Emsworth Walk Ashore Jetty** is available for 3½ hours each side of high water, neap tides (assuming one metre draught). Short stay jetty provides free touch and go or short stay up to 4 hours (charges apply). Fresh water is available. Access to the jetty is via a coded gate. Gate code is available by calling the Harbour Office.

**Visitors' Pontoon** is available in the Emsworth channel. Please note this is not a walk ashore facility. Maximum of 14 days rental. For full terms and conditions and charges visit [www.conservancy.co.uk/on-the-water](http://www.conservancy.co.uk/on-the-water)

**The Emsworth ferry** service is available to take passengers to and from their moored vessels. It runs Friday to Sunday plus bank holidays from Easter to the end of September, weather permitting. Running times are two hours either side of HW from 0830 until 1700. Call 'Emsworth Mobile' on **VHF Channel 14** or telephone **07864 915247**.

**Fuel is available** at Emsworth Yacht Harbour.

**Boat trips** on the Solar Heritage depart from Emsworth Jetty during peak summer months. Sailing trips on the Oyster Boat Terror depart from Emsworth Yacht Harbour.

### Itchenor

Public launching site at Itchenor and launching is available in all states of tide.

**Harbour Office – Itchenor: open weekdays 0900–1700. Patrol available onsite weekends (April to Oct).**  
Tel: **01243 512301**.

**VHF Channel 16** – International calling and safety channel. **VHF Channel 14** – calling and working frequency for Port Operation Channel.

A Port Operation and Information Service and VHF (FM) radio telephone watch is maintained by the Harbour Office during office hours and by Chichester Harbour Conservancy vessels when staffed.

**Call Sign Chichester Harbour Radio.**

### Car parking is available in Itchenor

Itchenor Car Park is controlled by Automatic Number Plate Recognition (ANPR). Charges are applicable. Payments must be made at the end of your parking session, immediately prior to departure or after leaving the car park. Further information: [www.conservancy.co.uk](http://www.conservancy.co.uk).

### Trailer parking is available at Itchenor

Trailers may be left on the Hard, adjacent to the viewing platform. Trailers may also be left in the car park. If leaving a trailer in the car park, a ticket must be purchased from the harbour office and clearly displayed on the trailer or accompanying vehicle. Charges are as per the current car parking tariff.

**Itchenor Jetty** is available at all states of the tide with a depth of approximately two metres at mean low water springs. The jetty provides touch and go, walk ashore short stay and overnight berthing options for multiple vessels. Washrooms with private toilets and showers (pin code access). Fully serviced (water) with electric hook up and charging facilities. Pump-out facilities – free to use. Contact harbour office or patrol team for bookings.

### Visitor pontoon

There are additional visitors' pontoon moorings above Itchenor Sailing Club on the western end of the CHC pontoon moorings. Visitors should restrict themselves to the first three lengths of pontoon only, as the remaining pontoon is allocated for permanent berths.

Maintenance Piles can be booked. **Call 01243 512301**.

The Itchenor ferry runs from Itchenor jetty to Smugglers Lane, Bosham, or to and from moorings from Deep End to Birdham, weather permitting.

**May to Sept**, daily 0900-1800.

**Apr and Oct**, weekends only 0900-1800.

**Nov to Mar**, weekends only 1000-1600.

Call 'Itchenor Ferry' on VHF Channel 08 or telephone **07970 378350**.

---

### Hayling Island

Petrol and diesel are available at Sparkes Marina. Diesel is also available at Northney Marina.

---

### Langstone

Public launching site possible about 2½ hrs either side of high tide.

---

### Prinsted

Public launching site from the Hard possible about 1½ hrs either side of high tide.

---

### Thorney Island

Contact Thorney Island Sailing Club for access. For Pilsey Island please avoid the restricted area to prevent disturbing wildlife. Anchoring is available east of Pilsey Island (note: this is a restricted area).

---

### West Wittering

Anchor at East Head, access to popular beach.

# Navigation and Safety

## Anchorage

- 1) West of the Fairway Buoy on the south of the channel.
- 2) East of Pilsley Island (note: this is a restricted area).
- 3) South of a line between East Head Spit Buoy and the Snowhill Buoy – the two unlighted starboard floating withies, to the south of these, mark the Chart Datum contour, (swimming can be dangerous because of the strong tide). Do not anchor in the main channel. When at anchor, vessels must display a black ball during the day and an anchor light at night.

**Chichester Bar** is an area of shoaling half a mile south of the harbour entrance and extending seaward for a further half a mile. The Bar is periodically dredged to achieve a depth of 1.5m below Chart Datum, after severe gales depths can change and it is then prudent to assume a minimum depth of 0.7m below Chart Datum. With a falling tide and strong winds from a southerly sector a dangerous sea may be encountered. In these conditions it is advisable to exercise caution and cross the Bar between three hours before and one hour after HW; this is particularly important during spring tides.

Mariners approaching from the west are advised to shape a course for West Pole Beacon. On rounding the Beacon pass between Eastoke Buoy and West Winner, keeping the Bar Beacon close to port. The dredged channel across the Bar is just under one cable wide with the western edge marked by the transit between West Pole Beacon and the Bar Beacon. When approaching from the east, mariners are advised not to cross the five metre contour until the West Pole Beacon bears 310°T.

**Caution** - Reduce speed and give a wide berth to vessels flying International 'OQ' (red/yellow over yellow) – compass adjusting; 'A' (blue and white) – diving operations; 'RY' (yellow cross on red over red and yellow diagonal stripes) – harbour maintenance; a black ball, diamond, ball, hoisted vertically – a vessel restricted in her ability to manoeuvre.

## Harbour Patrol

Call Chichester Harbour Patrol on VHF Channel 14 (156.70MHz). Chichester Harbour Conservancy vessels are fitted with multi-channel watch radios, therefore a long call is required on Channel 14.

The Harbour Entrance - statutory boundary of Chichester Harbour is an imaginary line drawn from Eaststoke Point to the spire of West Wittering church.

## Coastguard

Solent Coastguard co-ordinates all civil marine search and rescue operations within the area from BURY HEAD – BEACHY HEAD (Belle Tout). It monitors VHF Channel 16 and 67 and the 999 emergency service.

VHF Radio: Channel 16 but be ready to shift to Channel 67 when asked. Open 24 hours.

Only if you are in grave and imminent danger should you use the MAYDAY call. Should you have a very urgent message concerning the safety of a vessel or person then use the urgency signal PAN PAN.

## Tides

The tide times are on pages 16, 17 and 18. Please note you must add one hour in the shaded areas for British Summer Time. These times are for the harbour entrance and will be different by up to 30 minutes at other points in the harbour. Sailors should be aware of the strong tides in the harbour entrance. The flood tide may run at 2.8 knots and the ebb tide at a rate of 6.4 knots at springs, which can be dangerous for the inexperienced.

## Weather

For the MetOffice forecast for 48 hours and the 12 hour shipping forecast see [www.metoffice.gov.uk](http://www.metoffice.gov.uk) 48 hour inshore waters forecast Selsey Bill to Lyme Regis is displayed at the Harbour Offices at Itchenor and Emsworth. HM Coastguard 'Maritime Safety Information Broadcast' announced on VHF Channel 16, directing users to nominated working channel depending on your location. Commencing 0130 and every three hours thereafter. Broadcasts at 0730 and 1930 are full broadcasts, including, gale, shipping and inshore forecasts along with navigational warnings and range firing information. All broadcasts are in local time. Broadcasts may be delayed at times of busy Search & Rescue incident working.

Shipping Forecast, BBC Radio 4

92-95 FM – 0048, 0520 daily or 1515m/198khz

LW – 0048, 0520, 1201 & 1754 daily

Weather stations on West Pole and Camber Beacons provide real time wind speed, direction, water depth, wave height and periodicity, barometric pressure, air and sea temperatures.

[www.conservancy.co.uk](http://www.conservancy.co.uk), [www.chimet.co.uk](http://www.chimet.co.uk)  
[www.cambermet.co.uk](http://www.cambermet.co.uk), [www.sotonmet.co.uk](http://www.sotonmet.co.uk)

Sign up for our weekly Information for Mariner's email bulletin for news on weather, tides and racing each week (March to October) at [www.conservancy.co.uk](http://www.conservancy.co.uk).

## Harbour dues

All vessels using Chichester Harbour are required to pay harbour dues and display the plaque. Annual dues are valid from 1 April and expire on 31 March. Visiting vessels must pay by the day, 2 days or week. Visitors to the harbour can purchase dues by scanning the QR code shown on signs at launch sites, sailing clubs and marinas around the harbour. Harbour dues can also be paid at Itchenor or Emsworth Harbour Offices and via Harbour Patrol.

### Paddlecraft carrying no more than 2 persons – annual harbour dues rate £23.00

Please affix the harbour dues plaque to the port hand aft quarter of your vessel. The plaque must be clearly visible even if your vessel is covered and plaques from previous years should be removed. If you are not displaying a plaque you could be liable for a fine of three times the cost of the dues plus a £50 administration fee.

Visitors paying by QR code will not be issued with a physical plaque but will receive electronic proof of payment.

Overall length in metres		Annual Charge	7 Day Charge	48 Hour Charge	24 Hour Charge
From	Not Exceeding	(inc VAT £)	(inc VAT £)	(inc VAT £)	(inc VAT £)
Up to 3m		23.00	16.00	8.50	7.00
3.01m	4m	30.85	16.00	8.50	7.00
4.01m	5m	42.93	16.00	8.50	7.00
5.01m	6m	56.75	19.50	9.50	8.00
6.01m	7m	72.30	19.50	9.50	8.00
7.01m	8m	89.61	19.50	9.50	8.00
8.01m	9m	108.65	23.50	10.50	8.00
9.01m	10m	129.45	23.50	10.50	8.00
10.01m	11m	151.98	32.00	13.00	10.00
11.01m	12m	176.27	32.00	13.00	10.00
12.01m	13m	202.29	40.00	15.00	11.00
13.01m	14m	230.05	40.00	15.00	11.00
14.01m	15m	259.56	52.00	19.00	12.00
15.01m	16m	290.81	52.00	19.00	12.00
16.01m	17m	323.81	60.00	23.00	15.00
17.01m	18m	343.73	60.00	23.00	15.00
18.01m	19m	363.65	67.00	23.00	15.00
19.01m	20m	383.57	67.00	23.00	15.00
Over 20m		403.49	73.00	23.00	15.00

\*Tenders up to 3 metres used to access a registered parent vessel in the harbour - annual harbour dues rate £11.50. Tenders up to 4 metres - annual harbour dues rate £15.43 (limited to one tender per parent vessel).

**CHC maintained moorings fees are available at [www.conservancy.co.uk/onthewater](http://www.conservancy.co.uk/onthewater)**

# Local Notice to Mariners no.02 of 2026

## General instruction and advice

This Local Notice to Mariners is to be read in conjunction with the Byelaws for Chichester Harbour which may be obtained from the Harbour Office or online at [www.conservancy.co.uk](http://www.conservancy.co.uk).

Chichester Harbour Conservancy is responsible for managing the risks associated with marine operations to ensure they remain as low as reasonably practicable but has no wish to over-regulate the use of the Harbour. Going afloat can never be free of risk and everybody who uses the Harbour, especially those in control of vessels, has an important role to play to ensure the Harbour remains safe.

There may be times when it is not safe to participate in a particular activity. Before taking to the water those in charge of vessels, adults responsible for children and those organising events and races need to carefully consider the prevailing weather, tidal and traffic conditions.

For the latest information regarding harbour operations please visit our website.

Harbour users are advised of the following measures to facilitate the safe use of the Harbour:

### 1. Chichester Harbour – Speed of Vessels and Care

Attention is drawn to the speed limit of 8 knots which is in force for the whole of Chichester Harbour. Attention is also drawn to Chichester Harbour Byelaw No.4 'The Master of a vessel navigating the harbour shall navigate the vessel with care and caution and in such manner as shall not cause annoyance to the occupants of any other vessel or cause damage or danger to any other vessel or to any mooring or other property'.

Vessels navigating within mooring areas shall take particular care to comply with Byelaw No.4 by:

- reducing their speed so as not to cause undue wash;
- not overtaking in mooring area fairways, if such overtaking action shall place two vessels abreast

of any vessel or vessels navigating the fairway in the opposite direction;

- furling spinnakers in plenty of time in adverse weather conditions, before reaching the moorings - this is particularly applicable to large vessels, which should be under power at busy periods;
- using the main channels and not navigating between the lines of moorings, whenever possible.

### 2. International Regulations for Preventing Collisions

These regulations are incorporated into Byelaw No.10 and apply to the Harbour and to vessels navigating therein. Because of the considerable traffic in the Harbour, mariners are to pay particular attention to:

- keeping to the starboard side of the channel
- reducing speed and if necessary, altering course in plenty of time if the giving way vessel;
- if under power and sail displaying a black cone point down.
- vessels of less than 20 metres in length or a sailing vessel shall not impede the passage of a vessel which can safely navigate only within a narrow channel or fairway.

### 3. Reporting Concerns Relating to Safety

- a. Harbour users are requested to report immediately to the Harbour Master any reasonable concern they have regarding safety in Chichester Harbour. Harbour users are also requested to report incidents and damage which may affect safety in the Harbour.

### IN AN EMERGENCY DIAL 999 Or call SOLENT COASTGUARD on VHF Channel 16 or 67

- b. To report incidents or damage call "Chichester Harbour Radio" on VHF Channel 14 or telephone **01243 512301**. You may also submit a written report, or complete an Incident Report online at: [www.conservancy.co.uk](http://www.conservancy.co.uk)

- c. Incidents and damage that should be reported include:
  - damage to and collisions between vessels;
  - damage to navigation marks, harbour structures or facilities;
  - malfunctioning navigation marks;
  - dangerous near-miss situations between vessels;
  - vessels proceeding at an excessive speed or creating excessive wash, and;
  - any other dangerous occurrence.
- d. Chichester Harbour Conservancy complies with the Ports and Marine Facilities Safety Code and has appointed a Designated Person to monitor compliance with the Code and report to the Conservancy. Any reasonable concerns regarding safety in the harbour may (in addition to being reported to the Harbour Master) be brought to the attention of the Designated Person by writing to:-

**Monty Smedley**

**Designated Person (PMSC) Chichester**

**ABPmer**

**Quayside Suite, Edina Chambers**

**Town Quay**

**SOUTHAMPTON**

**SO14 2AQ**

**DPChichester@abpmer.co.uk**

**023 8071 1892 or 023 8071 1889**

### 4. Management of Recreational Events

- a. Organisers of events that may impact normal harbour activities and all events that involve racing (except those covered by f.) must contact the Conservancy at an early opportunity prior to any event taking place. For most types of events a formal risk assessment will be required. The content of this assessment will need to be proportional to the event / activity.
- b. The risk assessment and the safety management of a particular event will be the responsibility of the event organiser.
- c. The event risk assessment should identify all risks concerned with the safe and efficient use of the harbour by all harbour users. Details of how the risk is to be controlled will be part of the assessment.
- d. The formal risk assessment should be submitted not less than 4 weeks prior to the planned event to enable the Conservancy to comment and consult on the assessment. It is recommended that large events are consulted on in the autumn preceding

the event to avoid clashes with other events.

- e. The Conservancy will need to be satisfied that the risks to harbour safety have been effectively mitigated, before consenting to an event.
- f. Racing events coordinated through Chichester Harbour Federation and run in accordance with their Race Code of Conduct will not be required to submit risk assessments to the Conservancy for routine events.
- g. This notice is to be read in conjunction with document entitled – A Guide to Good Practice on Port Marine Operations (Section 8 Management of Navigation – Event Planning) DFT (last update 4 April 2018). Your attention is also drawn to the advice given in the preparation of risk assessments issued by the Royal Yachting Association ([www.rya.org.uk](http://www.rya.org.uk))

### 5. VHF Radio Communications

- a. All vessels whilst underway within Chichester Harbour are advised to monitor Chichester Harbour Radio on VHF Channel 14. VHF transmissions on this channel should be kept short and relevant.
- b. All vessels of 18m or more in length overall, and vessels not under command, restricted in their ability to manoeuvre, or towing a vessel or structure, over 12m in length, or the total length of the tow exceeds 20m are to give notice of their movements by reporting to 'Chichester Harbour Radio' on VHF Channel 14, giving the vessel's name, length, position and intentions.

### 6. Towing

- a. Towing Guidelines apply to all vessels towing a vessel or structure, over 12m in length, or the total length of the tow exceeds 20m. A towing plan must be provided to the Harbour Master before committing to enter the harbour or departing moorings. If it is necessary to provide towage assistance in an emergency, the towage provider should inform the Harbour Master of their intentions as soon as it is safe to do so. Emergency situations must be reported to HM Coastguard via CH16 or 999 and then the Harbour Master via **CH14 or 01243 512301**
- b. If these tows are unusual objects or non-routine towage events the movements should be approved in advance by the Harbour Master.

### 7. Safe Use of Tenders

Chichester Harbour Conservancy recognises that persons using tenders are responsible for their own

safety but it is concerned that some may be taking unnecessary risks. It is recommended that:

- a. the tender is of suitable size and stability for the intended purpose.
- b. all persons in tenders wear lifejackets;
- c. tenders are not overloaded;
- d. weather, sea and tidal conditions are properly assessed;
- e. tenders carry a torch at night;
- f. tenders carry a means of summoning assistance;
- g. tenders are not used by persons under the influence of drink or drugs.

## 8. Swimming

The harbour is not a designated bathing water area. Water is sampled on a regular basis and swimmers are encouraged to check the results (available on the Conservancy website) prior to swimming.

Chichester Harbour Conservancy is concerned that some swimmers expose themselves to unnecessary risk. Much of the Harbour is unsuitable for swimming and the parents of young swimmers, and swimmers themselves, are reminded of the following basic precautions: -

- a. Never dive or jump into water of an unknown depth.
- b. Never dive or jump from any structure.
- c. Never swim near moving boats, boats running their engines or boats which may depart their moorings.
- d. Never swim in the fairway or navigable channels.
- e. Never swim in strong currents and/or tides; these are particularly strong near the harbour entrance.
- f. Never swim after consuming alcohol or after a meal.
- g. Beware of the cold; hypothermia can kill.
- h. It is not advisable to swim alone.
- i. Always tell someone on the shore where you are swimming and when you expect to return to the shore.

## 9. Diving

- a. All diving for favour or reward (i.e., "at work") is subject to the Diving at Work Regulations 1997 (DWR 97) and the associated Approved Codes of Practice (ACOP). Diving at work may only be carried out by a diving contractor who has notified the Health and Safety Executive in compliance with the provisions in DWR 97 and dives may only be carried out in accordance with

the legal requirements. Additionally, Chichester Harbour Conservancy requires that divers at work apply for prior consent from the Harbour Authority before undertaking a dive.

- b. Chichester Harbour Conservancy strongly recommends that all diving (whether the diver is at work or not) should meet all of the above requirements.
- c. Sport or recreational diving which does not meet the above requirements is not recommended because of strong tidal flows, the number of underwater obstructions and moorings, and the numerous vessel movements in the Harbour.

## 10. Kite Surfing - Chichester Harbour

It has been assessed that kite surfing is incompatible with the safety and enjoyment of the other 10,500 vessels which regularly use Chichester Harbour. Kite surfers are advised that they may be directed, under Sections 4 and 89 of the Chichester Harbour Conservancy Act 1971 and Section 52 of the Harbours Docks and Piers Clauses Act, to stop kite surfing within the limits of Chichester Harbour, by Officers of Chichester Harbour Conservancy.

## 11. Foiling Craft

Wind propelled foiling craft are permitted to use the harbour. Those in charge of these craft are requested to maintain sufficient sea room and avoid getting into close quarters situations by avoiding busy channels, anchorages, and mooring areas.

Electric Hydrofoil Boards are not permitted to be used in Chichester Harbour without the written permission of the Harbour Master.

## 12. Use of Hovercraft

The Chichester Harbour Conservancy Act 1971 prescribes that the open port duty detailed in section 33 of the Harbours, Docks and Piers Clauses Act 1847 does not apply to hovercraft in Chichester Harbour. Hovercraft are not permitted to be used in Chichester Harbour without the written permission of the Harbour Master.

## 13. Use of Kill Cords in Powered Craft

Following a fatal accident, the Marine Accident Investigation Branch (MAIB) issued a safety bulletin highlighting that kill cords are a safety feature to stop an engine when the driver moves away from the controls. They emphasise that it is essential that operators of vessels fitted with kill cords:

- Test them regularly to ensure that the engine stops when the kill cord mechanism is operated.

- Make sure that the cord is in good condition.
- Always attach the cord securely to the driver, ideally before the engine is started, but certainly before the boat is put in gear.
- Stop the engine before transferring the kill cord to another driver.

The full MAIB Safety Bulletin is available:

[http://www.maib.gov.uk/publications/safety\\_bulletins/safety\\_bulletin\\_2013/safety\\_bulletin\\_1\\_2013.cfm](http://www.maib.gov.uk/publications/safety_bulletins/safety_bulletin_2013/safety_bulletin_1_2013.cfm)

## 14. Lifejackets

Remember to take your lifejacket afloat and wear it. Use your lifejacket crotch strap, remember to check and service your lifejacket regularly. Lifejackets are useless unless worn.

## 15. Consumption of Alcohol

Don't drink whilst in charge of a vessel. Alcohol is involved in about a third of all recreational boating fatalities.

## 16. Prohibited Anchoring

Anchoring is prohibited in or near mooring areas or in the vicinity of navigation and racing marks and within navigational channels. Vessels should avoid anchoring in areas of seagrass due to prevent damage to this sensitive habitat.

Vessels at anchor are to exhibit a black ball or white light. Vessels are not to be left unmanned at anchor for periods of more than four hours (Byelaw No. 12).

## 17. Improper Use of Distress Signals

In the interests of safety the attention of all yachtsmen and other harbour users is drawn to Chichester Harbour Conservancy Byelaw No. 23. Persons wishing to organise firework displays etc. within the Harbour are advised to consult the Harbour Master.

## 18. Vessel Landed Waste Reception and Pollution

- a. It is an offence for any vessel, including recreational vessels, regardless of size, to discharge any refuse overboard within specified distances from land, and in the case of plastics and other persistent rubbish, in any sea area surrounding the UK (International Convention for Prevention of Pollution from Ships (MARPOL 73/78))
- b. Mariners are advised that reception facilities for vessel landed waste are located at, or close to, all mooring areas and marinas within Chichester Harbour. Chichester Harbour Conservancy administers a Port Waste Management Plan on

behalf of all waste facility providers in the harbour and this document can be viewed at [www.conservancy.co.uk](http://www.conservancy.co.uk). This document details the location and types of waste collection facilities including recycling, and vessel pump-out facilities. Any enquiries relating to waste facilities should be directed to the local mooring provider or to the Harbour Office. It is a serious offence to discharge waste at sea or into harbour waters.

- c. All harbour users are requested to report all sightings of oil pollution immediately to Chichester Harbour Radio on VHF Channel 14 or by telephone on 01243 512301. At times when the Harbour Master's Office is unmanned, reports should be made to Solent Coastguard on VHF Channel 16 or 67, or by telephone on 02392 552100.

## 19. Workboat Registration

The operators of workboats based in Chichester Harbour, whether working exclusively within Chichester Harbour, or licensed by the MCA or other body to operate outside the Harbour, are requested to register their vessels with the Harbour Master.

## 20. Chichester Bar

Chichester Bar is periodically dredged to achieve a depth of 1.5m below Chart Datum. Following severe gales depths may vary and it is then prudent to assume a least depth of 0.7m below Chart Datum. Details of the latest bathymetric survey are available from the Harbour Office or promulgated in LNTM's at [www.conservancy.co.uk](http://www.conservancy.co.uk).

With a falling tide and strong winds from a southerly sector a dangerous sea may be encountered. In these conditions it is advisable to exercise caution and cross the bar between three hours before and one hour after HW springs.

**Capt. Jo Cox**  
**Harbour Master**  
**05 January 2026**

# Anchoring with care in Chichester Harbour

For many boaters and sailors, dropping anchor provides an enjoyable experience on the water and sometimes incidents can necessitate anchoring for safety.

Chichester Harbour is home to many precious seabed habitats including seagrass meadows; by anchoring with care you can play a part in protecting these habitats and ensuring the future biodiversity of the harbour.

As a sailor/boater, small changes can make a really positive impact on seagrass beds.

## Environmentally conscious anchoring:

- Stick to designated anchorages.
- Avoid anchoring on seabed vegetation – look for bare seabed.
- Flake out the correct amount of chain or chain and warp for your vessel to minimise additional chain abrasion on the seabed.
- Avoid anchoring near resting or feeding birds, or hauled-out seals.

## There are three designated anchorages in Chichester Harbour:

- East Head.
- South of the Fairway to the west of Itchenor reach.
- East of Pilsley Island (NB – Pilsley Island is a no-landing zone to protect breeding and overwintering bird populations).

Sticking to these anchorages will minimise damage to habitats elsewhere in the harbour.

## Why protect seagrass meadows?

- They are one of the most rapidly declining habitats on earth.
- They are home to a vast array of marine wildlife including seahorses, crabs, anemones and are a nursery ground for fish.
- They stabilise sediment reducing coastal erosion.
- Healthy seagrass meadows store carbon, mitigating climate change.

## Safety points:

- No anchoring in the channels.
- No anchoring in the vicinity of jetties and moorings.
- Ensure you keep a proper and effective anchor watch.
- Ensure you flake out enough rope/chain for your vessel, and the prevailing weather and tidal conditions.
- Consider the position of other vessels and leave adequate space.



# FOR ALL YOUR VESSEL MAINTENANCE

VOLVO PENTA

YANMAR

HONDA MARINE

torqeedo

LEWMAR

MASTERVOLT  
THE POWER TO BE INDEPENDENT

COPPER COAT

Serving Chichester Harbour  
with offices in:

**NORTHNEY MARINA**  
**CHICHESTER MARINA**

## MECHANICAL ENGINEERING

Servicing, diagnostics and repowers provided for all makes of inboard and outboard engines

## ELECTRICS AND ELECTRONICS

Bow to stern support, upgrades and installations

## YACHT CARE

Available for all your valeting, yard works and repairs on board

## VESSEL MANAGEMENT

Experts in vessel ownership and blue water cruising preparation

**OCEAN**  
**MARINE**

01243 512944

info@oceanmarine-services.co.uk



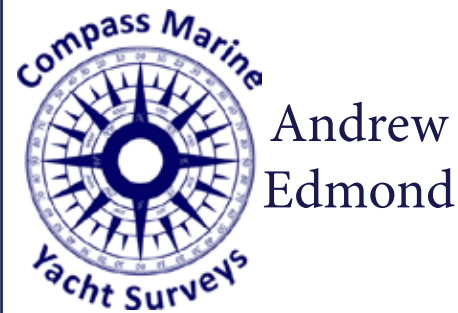
Let us take care of your maintenance and repairs

We're a small, family-run business based in Emsworth since 1989 and are authorised MDL and Premier Marinas contractors.

Main dealers for **Yanmar** and **Beta Marine**, we specialise in the installation, servicing and repair of all marine diesel engines and stern gear systems.



Visit [www.cutlermarine.co.uk](http://www.cutlermarine.co.uk) for your servicing, maintenance and repair needs.



Locally based, experienced and qualified surveyor working on the South Coast and across Europe

<b>Surveys</b> pre-purchase, insurance, damage, coding, tonnage	<b>Consultancy</b> refits, new builds, management of post purchase works, all types of problems solved
---	--

**07714 340 487**  
andrew@compassmarinesurveys.com  
www.compassmarinesurveys.com

## H T Bettle & Co

— Marine Yacht Surveyor —

Chichester Based Yacht Surveyor.  
Expert, Independent Yacht Surveys

### SERVICES

- Pre-Purchase Surveys
- Insurance Surveys
- Pre-Sale Surveys
- Specific Item Surveys
- Surveys for Valuation
- Damage Assessment Surveys

### CONTACT

☎ 07545 753074  
✉ [htbettle@gmail.com](mailto:htbettle@gmail.com)  
🌐 [htbettleyachtsurveys.com](http://htbettleyachtsurveys.com)



**128 Five-Star Google Reviews**  
Call now for a quote and helpful advice

# DISCOVER NORTHSHORE

## A HOME FOR BOATS, WORK & ADVENTURE IN CHICHESTER HARBOUR

### → BOATYARD

A full-service boatyard with year-round support, indoor and outdoor storage, and space to maintain your boat your way.

### → LIFT & LAUNCH

Clean hulls. No queues. Your boat afloat when you need it. Stored ashore and launched on request – with expert support every step of the way.

### → BOAT CLUB

Boating without owning. Year-round access to a fleet of great boats – for those who want the experience, without the responsibility.

### → WORKSPACES

Workshops, offices, studios, coworking and meeting rooms. For marine businesses and people who simply work better by the water.



VISIT: [NORTHSHOREBOATYARD.CO.UK](http://NORTHSHOREBOATYARD.CO.UK)  
CALL: 01243 210 900

WE'RE PROUD TO BE PART OF THE TRAFALGAR GROUP





# HGFR

MARINE SERVICES

Structural and cosmetic repairs for yachts, motorboats and RIBs.  
Trusted by leading manufacturers and marine insurers.  
Maintaining, restoring and protecting above and below the waterline.

Call: 02392 464109

Email: [info@hgfr.co.uk](mailto:info@hgfr.co.uk)

Visit: [hgfr.co.uk](http://hgfr.co.uk)

Serving Chichester Harbour since 1976

## ITALIAN UPHOLSTERY

### CANVAS MANUFACTURE & REPAIR

Birdham Pool Marina, PO20 7BG

- Pack-a-Main/Stack Pack
- Cockpit Enclosures
- Flybridge Bimini
- Sprayhoods
- Cabin Upholstery
- Sail Repairs & Re-Cutting
- Sail Laundry
- Boat Covers & Re-proofing
- Cleaning Covers
- Storage of Sails

07568 185539

[ITALIANUPHOLSTERY@GMAIL.COM](mailto:ITALIANUPHOLSTERY@GMAIL.COM)  
[WWW.ITALIANUPHOLSTERY.CO.UK](http://WWW.ITALIANUPHOLSTERY.CO.UK)



### BOSHAM YACHT COMPANY

[boatyard@boshamyachtcompany.co.uk](mailto:boatyard@boshamyachtcompany.co.uk)

Serving yachts, motor cruisers, ribs and day boats in the Bosham Channel and Itchenor Reach.

Full winter layup service from your mooring to our yard or inside storage in Bosham, or to your home.

All maintenance and cleaning services, on or off the water.



[WWW.BOSHAMYACHTCOMPANY.CO.UK](http://WWW.BOSHAMYACHTCOMPANY.CO.UK)

[BOATYARD@BOSHAMYACHTCOMPANY.CO.UK](mailto:BOATYARD@BOSHAMYACHTCOMPANY.CO.UK)

## Sailing Clubs

Bosham Sailing Club	01243 572341	<a href="http://www.boshamsailingclub.com">www.boshamsailingclub.com</a>
Chichester Cruiser Racing Club	07546 843150	<a href="http://www.cccr.co.uk">www.cccr.co.uk</a>
Chichester Yacht Club	01243 512918	<a href="http://www.cyc.co.uk">www.cyc.co.uk</a>
Christian Youth Enterprises	01243 573375	<a href="mailto:admin@cye.org.uk">admin@cye.org.uk</a>
Cobnor Activity Centre	01243 572791	<a href="mailto:sail@cobnor.com">sail@cobnor.com</a>
Dell Quay Sailing Club	01243 785080	<a href="http://www.dellquaysc.co.uk">www.dellquaysc.co.uk</a>
Emsworth Cruising Association		<a href="http://www.emsworthcruisingassociation.co.uk">www.emsworthcruisingassociation.co.uk</a>
Emsworth Sailing Club	01243 372850	<a href="http://www.emsworthsc.org.uk">www.emsworthsc.org.uk</a>
Emsworth Slipper Sailing Club	01243 372523	<a href="http://www.emsworthslippersc.org.uk">www.emsworthslippersc.org.uk</a>
Hayling Island Sailing Club	02392 463768	<a href="http://www.hisc.co.uk">www.hisc.co.uk</a>
Itchenor Sailing Club	01243 512400	<a href="http://www.itchenorsc.co.uk">www.itchenorsc.co.uk</a>
Langstone Sailing Club	02392 484577	<a href="http://langstonesc.org.uk">langstonesc.org.uk</a>
Mengeham Rythe Sailing Club	02392 463337	<a href="http://www.mengeham.org.uk">www.mengeham.org.uk</a>
Thorney Island Sailing Club	01243 371731	<a href="http://www.tisc.org.uk">www.tisc.org.uk</a>
West Wittering Sailing Club	07774 462093	<a href="http://www.wsc.co.uk">www.wsc.co.uk</a>

## Marinas, Boatyards and Quays

Birdham Pool Marina	01243 512310
Bosham Quaymaster	01243 573336
Bosham Yacht Company	01243 513345
Chichester Marina	01243 512731
Dell Quay Marine	01243 785954
Dolphin Quay Boatyard	01243 513872
Emsworth Yacht Harbour	01243 377727
Haines Boatyard	01243 512228
Hayling Yacht Company	02392 463592
Northney Marina	02392 466321
Paynes Boatyard	01243 374411
Pepe Boatyard	02392 461968
Sparkes Marina	02392 463572
Thornham Marina	01243 375335
Wilson's Boatyard	02392 464869
Sophie's Boatyard	01243 782768

## Fishing Clubs

Bosham Fisherman's Club  
[boshamfishermansclub@gmail.com](mailto:boshamfishermansclub@gmail.com)

Alpuldram Fishing and Boat Club  
[afbcenquiries@gmail.com](mailto:afbcenquiries@gmail.com)

# Be Wildlife-Aware on the Water

Chichester Harbour is one of the most important sites for wildlife in the UK, internationally important as a home for over-wintering birds, as well as breeding seabirds. Two species of seals use the harbour at low tides to rest on the mudflats.

**As harbour-users, sharing space with such special wildlife is a privilege. Follow these tips to avoid disturbing birds and seals:**

**Keep your distance** – avoid getting within 100m of hauled-out seals and flocks of feeding or roosting birds.

**Shhhhhh** – stay wildlife-friendly by keeping quiet and avoiding sudden changes of direction.

**Always allow seals an escape route** – avoid boxing them in or blocking narrow channels. If you see a seal in the water slow down (no-wake) and keep a steady course – with no sudden movements. Please don't steer towards it.

**Protect Sensitive Spaces:**

- Islands, spits, mud and saltmarsh are vital habitats for our wildlife – avoid landing and keep your distance.
- Never land at a seal haul-out site.
- Avoid landing at Stakes Island, Pilsay Island, Ella Nore Spit and Gutner Point – these are highly sensitive roosting and breeding sites.
- Stick to the main channels – small creeks are perfect hiding spots for wildlife sensitive to disturbance.

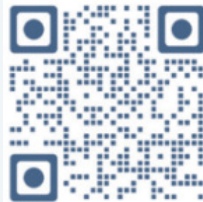
**Use recognised launch/recovery sites and avoid dragging vessels across the mud and foreshore – this can damage habitats such as saltmarsh and seagrass beds.**

## How do you know if you are disturbing a seal?

- If it's looking directly at you, the seal's fight or flight response has been activated – remain quiet and move away.
- If it is moving from its resting position it's stress levels have increased and it is already wasting precious energy – move away slowly and quietly.
- If it is making for the water it is fleeing in panic – move away immediately.

## View the Map:

Visit the Bird Aware Solent interactive Watersports with Wildlife map. As well as pinpointing the wildlife sensitive areas, it suggests wildlife-friendly launch sites.



## Why do seals need space?

Two species of seals visit Chichester Harbour to rest on the mud flats at low tide – Harbour Seals and Grey Seals. Known as 'hauling-out', this time resting is vital for them to digest their food, socialise and feed their pups. They're large mammals and not very mobile on land; disturbing them from their haul-out wastes their energy supplies, adversely affects their health and can even result in the death of a pup if it is separated from its mother.



## Why do birds need space?

The wading birds and wildfowl that spend their winters in Chichester Harbour have flown 1000s of miles to be here and feed on the mudflats and saltmarshes. Over the winter months, every bit of energy counts; when they are disturbed and take flight they waste precious energy which affects their survival chances. At high tide birds rest on islands, spits and upper parts of the saltmarsh. These 'roosts' provide a safe space for them to rest, sleep and digest their food. In the summer it's often these areas that provide safe nesting ground for threatened species including Little Terns and Ringed Plover. If disturbed, birds can take flight exposing their eggs to bad weather or predators.



# Chichester Harbour Friends

Nature Recovery Needs People



Photo: Paul Adams

## Let's pull together for nature recovery

As a registered charity, Chichester Harbour Friends supports Chichester Harbour Conservancy's work protecting and restoring nature - ensuring the Harbour is a haven for wildlife and recreational pursuits, each in harmony with the other.

**Become a Friend by helping us fund projects that will preserve and enhance our environment for generations to come.**



## Scan to join today

[chichesterharbourfriends.org](http://chichesterharbourfriends.org)

